



FIRST PRESBYTERIAN CHURCH NEWSLETTER

Albemarle, North Carolina

Elizabeth McNair Ayscue, Pastor

Matt Drumheller, Associate Pastor

Frank Poolos, Director of Vocal and Handbell Music

Stan Scheer, Organist

Gina Martin, Director of Christian Education

Pam Knighten, Secretary

Kyle Lambert, Office Manager

Church Office: (704) 982-2722

Website:www.fpcalbemarle.org

E-mail:klambert@fpcalbemarle.org



Summer 2016

Dear Friends,

Though schedules and routines may change during the summer, many things will stay the same. At First Presbyterian Church, we will continue to worship together each week, to serve our community, to pray for one another, to welcome strangers, and to embody the presence of the risen Christ wherever we are.

Our summer sermon series (June 12-August 7) will help us walk through the book of Revelation (also known as the Revelation to John). We will explore the images, symbols, and certainties in this puzzling, sometimes frightening, book of the Bible through the lens of Reformed theology. Perhaps we will make new discoveries, question previous interpretations, and find our way to the new Jerusalem together. Though often described differently, Revelation is first and foremost a powerful witness to the hope that is ours in Jesus Christ. We will celebrate that together.

As you begin summer travels and visits with family and friends in other places, please know that your presence will be missed in this place. I hope you will be in worship whenever you can, either here or away.

**Grace and Peace,
Elizabeth**



CELEBRATE GENEROSITY

Celebrating Generosity is this year's stewardship theme. You may be thinking - stewardship is usually discussed in the fall – does she know it is spring? Yes, I do. However, stewardship is more than a once a year response to God's generosity to us. We live out our stewardship throughout the year when we share our talents, time, and money with our church, community and family.

The newly formed Generosity Committee (Rebekah Ayscue, Steve Cumming, Jack Morton, Marlene Sanges, Elizabeth, and me) is actively preparing opportunities to remind all of us of the acts of generosity that surround each of us every day. During the year through many venues, you will see or hear allusions to this theme via the following three areas – Ignite Generosity, Contagious Generosity and Fearless Generosity. Be ready for a year of consciously living generously!!!

Debbie Bennett, Stewardship and Generosity Committees Chairperson

Chapter 1 The revelation from Jesus Christ, which God gave him to show his servants what must soon take place. He made it known by sending his angel to his servant John, who testifies to everything he saw—that is, the word of God and the testimony of Jesus Christ. Blessed is the one who reads the words of this prophecy, and blessed are those who hear it and take to heart what is written in it, because the time is near. I, John, heard these things and saw them, and I have written them on a scroll and sent them to the church. I am John the brother and companion of the prophets, and I have written these things in the church. The Spirit and the bride say, "Come." And he who hears let him come. And he who is thirsty let him come and take of the water of life free of charge. I, Jesus, have sent my angel to testify to you these things, and I have written these things on a scroll and sent them to the church. I am the root and offspring of David, and the bright morning star. The Spirit and the bride say, "Come." And he who hears let him come. And he who is thirsty let him come and take of the water of life free of charge. I, Jesus, have sent my angel to testify to you these things, and I have written these things on a scroll and sent them to the church. I am the root and offspring of David, and the bright morning star.

R evelation

Summer Sermon Series Begins Sunday, June 12

Revelation Summer Bible Reading

June 12	Revelation 1:1-8	July 1	Revelation 7:13-17	July 20	Revelation 16:1-9
June 13	Revelation 1:9-16	July 2	Revelation 8:1-5	July 21	Revelation 16:10-21
June 14	Revelation 1:17-20	July 3	Revelation 8:6-13	July 22	Revelation 17:1-8
June 15	Revelation 2:1-7	July 4	Revelation 9:1-11	July 23	Revelation 17:9-18
June 16	Revelation 2:8-11	July 5	Revelation 9:12-21	July 24	Revelation 18:1-13
June 17	Revelation 2:12-17	July 6	Revelation 10:1-7	July 25	Revelation 18:14-24
June 18	Revelation 2:18-23	July 7	Revelation 10:8-11	July 26	Revelation 19:1-16
June 19	Revelation 2:24-29	July 8	Revelation 11:1-14	July 27	Revelation 19:17-21
June 20	Revelation 3:1-6	July 9	Revelation 11:15-19	July 28	Revelation 20:1-6
June 21	Revelation 3:7-13	July 10	Revelation 12:1-6	July 29	Revelation 20:7-10
June 22	Revelation 3:14-22	July 11	Revelation 12:7-12	July 30	Revelation 20:11-15
June 23	Revelation 4:1-6	July 12	Revelation 12:13-17	July 31	Revelation 21:1-8
June 24	Revelation 4:7-11	July 13	Revelation 13:1-10	August 1	Revelation 21:9-14
June 25	Revelation 5:1-8	July 14	Revelation 13:11-18	August 2	Revelation 21:15-21
June 26	Revelation 5:9-14	July 15	Revelation 14:1-5	August 3	Revelation 21:22-27
June 27	Revelation 6:1-8	July 16	Revelation 14:6-13	August 4	Revelation 22:1-7
June 28	Revelation 6:9-17	July 17	Revelation 14:14-20	August 5	Revelation 22:8-11
June 29	Revelation 7:1-8	July 18	Revelation 15:1-4	August 6	Revelation 22:12-16
June 30	Revelation 7:9-12	July 19	Revelation 15:5-8	August 7	Revelation 22:17-21

WORSHIP

- June 5** Graduating high school seniors will be recognized and William Oliver Lentz will receive the Sacrament of Baptism. All youth and adults who are participating in summer church trips will be commissioned in worship.
- June 12** Dr. Brian Blount, president of Union Presbyterian Seminary, will preach the first sermon in our summer series on the book of Revelation. Widely known as a fine preacher and renowned scholar on Revelation, Dr. Blount has written a definitive commentary on this book. The congregation of First Presbyterian Church, Norwood will join us for worship. A reception will follow worship so that both congregations will have opportunity to greet Dr. Blount.
- June 19** The sermon will introduce the book of Revelation.
Text: Revelation 1:1-8
- June 26** The theme of the sermon will be the seven churches in Revelation.
Text: Revelation 1:9-20
The choir will present their Independence Day music.
- July 3** Sermon Theme: The Throne Room
Text: Revelation 5:6-14
- July 10** Sermon Theme: The Seven Seals
Text: Revelation 6:1-10, 12-14, 17; 8:1
- July 17** Scottish Communion
Sermon Theme: The 144,000
Text: Revelation 7:1-17
We will celebrate the Sacrament of the Lord's Supper.
- July 24** Sermon Theme: The Beasts
Text: Revelation 13:1-18
- July 31** Sermon Theme: The Death of Death
Text: Revelation 19:11-21; 20:11-15
- August 7** Sermon Theme: The New Jerusalem
Text: Revelation 21:1-7; 22:1-7
- August 14** The Reverend Sharon Bryant, PCUSA Mission Co-Worker in Thailand (and life-long friend of Paul & Karen Hinkle) will be our guest preacher. She was last with us several years ago and will return to update us about her work on our behalf.
- August 21** Scripture: Jeremiah 1:4-10 and Luke 13:10-17
- August 28** Scripture: Jeremiah 2:4-13 and Luke 14:1-7
We will celebrate the Sacrament of the Lord's Supper.



FIRST PRESBYTERIAN CHURCH COOKING CAMP FOR KIDS

(completed 4th - 6th Grades)

June 20-23

9:00 a.m.-1:00 p.m.

Cost: \$25.00 per child

Camp Limit of 12 children

!!! Grandchildren Welcome !!!



Do your children have a passion for cooking or love to help you prepare meals in the kitchen? Then perhaps a cooking camp is the perfect summer camp for them. This camp is offered to completed 4th-6th graders on Monday, June 20 - Thursday, June 23 from 9:00 a.m.-1:00 p.m. Young chefs expand their palates, kitchen hygiene and healthy eating habits, utensil skills, proper etiquette, cooking and baking and will experiment with flavors and ingredients. This camp will be packed with culinary excitement and tasty adventures! We will also be visiting Carolina Farms, an innovative program in Albemarle that enables individuals from the autistic population to realize a dream of living and working in a farm environment, where we will harvest fresh produce and return to church to prepare what we have harvested.

For more information, to register for camp, or to volunteer contact Jane Snyder at 704-982-2722/704-438-3358 or jsnyder@fpcalbemarle.org.

Whether, then, you eat or drink or whatever you do, do all to the glory of God. - 1 Corinthians 10:31



The mission of The Presbyterian Homes, Inc., and its communities is to provide senior adults with caring and high quality services in support of their physical, intellectual, social, and spiritual well-being. The Presbyterian Homes, Inc., has a covenant relationship with the Presbyterian Church (USA).

This year, The Presbyterian Homes, Inc., will provide more than \$1 million in financial assistance to elderly residents in need. Your contributions through the Mother's Day/Father's Day Offering provide an important portion of this financial assistance. In its 64 year history, **no resident has ever been asked to leave** a Presbyterian Homes retirement community because he or she outlived his or her funds. The Presbyterian Homes, Inc., serves approximately **1,100 residents**. Some of those residents are of modest means and could not afford to live at the retirement communities if it were not for the generosity of Presbyterians like you. Some of those receiving assistance have faithfully served the church and/or our communities during their employment years. With longevity, medical advances, and increasing health care costs, **continued support from Presbyterian churches is needed. Thank you for your partnership with The Presbyterian Homes, Inc.**

FATHER'S DAY ARRANGEMENTS



On Father's Day, the arrangements in the sanctuary will be in honor/memory of fathers. Each name is \$2.00. Please mail, deliver, or place in the offering plate your money with the form below **NO LATER THAN SUNDAY, JUNE 12.** Please make your check payable to First Presbyterian Church and designate for *Father's Day Arrangements*. The names of donors and those being honored/remembered will be listed on **Father's Day, June 19**. Any money collected over the cost of the arrangements will be donated to the Minister's Discretionary Fund.

FATHER'S DAY ARRANGEMENTS

Please print below the information exactly as it is to appear in the bulletin.

In memory of: _____

Given by: _____

In honor of: _____

Given by: _____



Music & Arts Camp Volunteers' Meeting Sunday, June 5

11:00 a.m. in the Session Room

Come hear final details about camp:

Who's coming?

What fun things will they do?

Where will it all happen?

It's not too late to volunteer. If you have some time the week of June 12-16, come join us as we sing, dance, paint and move with this adorable group of 100 children! Contact Gina Martin (gmartin@fpcalbemarle.org or 704-982-2722) to say you will help.

We Need Your Help with COOKING CAMP June 20-23



If you have **some time** the week of June 20-23, come join us at **COOKING CAMP**. For more information, contact Jane Snyder ([704-982-2722/704-438-3358](tel:704-982-2722) or jsnyder@fpcalbemarle.org).



The Chancel Choir will continue its Wednesday 7:00 p.m. rehearsals through May 25. Beginning June 5 when Sunday worship will start at 10:00 a.m., the choir will meet for rehearsal in the choir room at 9:00 a.m. on Sunday mornings. The choir will continue to sing for Sunday services through June 26. During July and August, the choir will take a well-deserved break. The fall rehearsal schedule will commence on Wednesday, September 7, and the choir will return to the loft on Sunday, September 11.

**Chancel Choir Retreat
Save the Date
Saturday, November 5
9:00 a.m.-3:00 p.m.
Henry Pfeiffer Chapel
Pfeiffer University**



STEWARDSHIP AND SUCH...APRIL 2016 FINANCIAL REPORT

GENERAL FUND

Actual:	<u>Year to Date</u>	<u>Budget-to-Date</u>
Total Income Received:	157,217.00	186,887.00
Total Expenses:	<u>210,899.00</u>	<u>196,770.00</u>
(Shortage)/Surplus:	(53,682.00)	(9,883.00)

GENERAL FUND BUDGET

	<u>2016</u>	
Pledges:	505,070	Weekly Amount Needed to Keep Commitments: <u>\$10,866</u>
Total Income:	565,035	Average Weekly Amount Received in April : <u>\$9,829</u>
Total Expenses:	565,035	

We are behind \$6,711 in pledges. (\$14,305 of 2016 pledges was prepaid in 2015)

Ten-Cents-A-Meal April: \$413

FUN AND YOUR GIVING OPPORTUNITY



Summer is just around the corner and the grueling days of winter work along with school and bus schedules and every activity that one can think of to be involved/play in will soon be replaced with days at the pool, summer camps, and VACATION! When you find yourself away from church frequently and busy with summer fun, please consider this: *Each one must give as he has made up his mind, not reluctantly or under compulsion, for God loves a cheerful giver. (II Corinthians 9:7)*

Regular giving is important for us as disciples of Jesus. First Presbyterian Church encourages you to utilize our online giving tool at the www.fpcalbemarle.org website this summer. It enables you to make your automated contribution because it is important to you. It's easy to get busy having summer fun and you will find that online giving is easy! It is a safe, secure and an efficient way to keep up with your regular giving.

We pray that as we continue to be regular, cheerful and sacrificial givers, we will continue to reflect the will of our God to our world and more people will meet Him.

NEWS and NOTES

MEMORIALS AND HONORARIUMS

Minister's Discretionary Fund:

- In memory of Martha McNair, given by Doris R. Forte.
- In memory of Martha McNair, given by Susan & Banks Garrison.
- In memory of Martha McNair, given by Mr. & Mrs. Jim Ivey.
- In memory of Martha McNair, given by Gina & Roger Martin.
- In memory of Martha McNair, given by Miriam Russell.
- In memory of Martha McNair, given by Mr. & Mrs. Larry Sitton.
- In honor of Polly Moose, given by Joseph & Brenda Huneycutt.

Our Living Legacy Fund:

- In memory of Martha McNair, given by HESSIE CLARK.
- In memory of Martha McNair, given by Mr. & Mrs. Tom Rabe.

Scholarship Endowment:

- In memory of Martha McNair, given by Janet & Rich Schaefer.

SYMPATHY

- To the family of Brett Fenwick who entered the Church Triumphant on May 23. He died at home following a brief illness. Brett served as Associate Pastor in this congregation from 1968-1971.
- To Elaine Coats & family and Pam Myers upon the death of their father, Ed Myers, on May 27.
- To Betty Crook & family upon the death of her husband, C.B. Crook, on May 28.
- To Kyle Lambert & family upon the death of her mother, Dennie Carpenter, on May 31.

CONGRATULATIONS

- To Kim and Mark Andrew upon the birth of their grandson, Banks Allen Andrew, on May 14. Proud parents are Lynsey and Russ Andrew.
- To Caroline Morton and Rory Chisholm who were married on May 21 in Vinton, Virginia.

NEWS *and* NOTES

Session Notes

At its stated meeting on May 15, Session heard from: Tom Norwood did a spotlight presentation on the activities of the Nominating Committee and gave a comparison of our church compared to other Presbyterian Churches in our area of the state. A few more volunteers are needed to help with Music and Arts camp starting June 12th. Summer worship services will focus on Revelations. The well in Zambia has had the well pump, solar panel, and storage facility installed. It is waiting on the final inspection report.

Lynn White, Clerk of Session

Circle #5

Circle #5 has the following summer schedule:

Meeting at the home of Gloria Bryson (811 Smith St., Albemarle) on Monday, June 6 at 7:00 p.m. She will lead the discussion on Lesson 8.

Meeting at the home of Sally Grantier (522 Avondale Ave., Albemarle) on Monday, August 29 at 7:00 p.m. Ann Duckwall will lead the discussion on Lesson 9.



**Beginning June 3, the church office will be closed on Fridays.
The office will be open Monday-Thursday from 9:00 a.m.-5:00 p.m.**

This summer newsletter is an attempt to pull together information about many of the goings-on of the church during June, July, and August. However, more information will be forthcoming in weekly bulletins. Contact Pam (pknighten@fpcalbemarle.org or 704-982-2722) with your email address to receive the current church bulletin or visit the bulletin link on the website at www.fpcalbemarle.org.



September Newsletter Deadline...Tuesday, August 16.

Early submissions are always welcome!

If you type your items in Microsoft Word, please email them as an attachment to:

pknighten@fpcalbemarle.org.

**STANLY COMMUNITY CHRISTIAN MINISTRY
FOOD CHALLENGE FOR
JUNE, JULY, & AUGUST:
June: Soup & Crackers
July: Macaroni & Cheese, Rice, Pasta
August: Canned Vegetables**



COMMUNITY TABLE ON SATURDAY, JUNE 11
First Presbyterian Church will serve lunch at the Community Table on June 11. Contact Linda Anderson (704-982-3723) for more information and/or if you can help.

To:

Gloria Bryson, Ann Duckwall, Ruth Goodwin, Sally Grantier, Nancy Joines, Frankie Palmer, Ruth Ann Rogers, Sandy Rogers, Rich Schaefer, and Martha White for assisting in the office during May.

This was a very fun First Family with the Build-your-Own Bowl stations! Thanks to all the people that make my job fun, enjoyable and much easier: Linda Anderson, Mildred Andrew, Rebekah Ayscue, Jane Boone, Ruth and Andy Cotton, Ann Duckwall, Peggy Finley, John and Debbie Hahn, Bill Hall, Anna and Peter Henkenjohann, Leslie, Stephan, and Morgan Kinley, Mark Mabry, Kyle Marks, Sarah Michael, Gayle Russell, Harold Sharpe, Ellen Smet, Ken Knight and Connie Wallace, Elizabeth Wilson, all those who helped break down the tables and chairs and clean up the gym. I depend heavily on my First Family volunteers and am so thankful for your presence. I love spending time with you!!
Jane Snyder, Director of Fellowship Services

Thanks from Witt Snuggs...Your generosity is overwhelming. I appreciate the many people who had BBQ following worship on May 22 and contributed to my Eagle Scout project for the YMCA park. Thanks to you, I raised more than \$1200. I appreciate your support!





Do you ever see a name on the prayer list and think, *Now who is that?* Or forget what the relationship is? You are not alone as many folks have asked for help with this. The *Prayer List Connection* will refresh all our memories. Folks with chronic needs will be listed for a month in the bulletin. Following that month, we will keep them on the newsletter's *Prayer List Connection* for as long as we are requested to do so. Critical prayer concerns will be added weekly to the prayer list in the bulletin.

Friends of the Congregation:

- Chrissy Adams**, friend of Shannon & Kent Newport; Hodgkin's disease.
- Jim Barringer**, friend of Martha Sue Hall; heart issues.
- Ted Biggers**, friend of Martha Sue Hall & Dan Samples.
- Margaret Brooks**, friend of Debbie Hahn; at an assisted living facility.
- Bob & Bessie Burris**, grandparents of Kim Caudle.
- Glenn Burris**.
- Jan Burton**, mother of Mandy Brown; breast cancer.
- Katherine Cox**, mother of Sherrie Richards.
- Rachel Darling**, friend of Dona Lisk; ovarian cancer.
- Mike Dearstyne**, brother of Holly Norwood; medical concerns.
- Roy & Katie Dearstyne**, parents of Holly Norwood.
- Sara Dyer**, mother of Martha White; ongoing health concerns.
- Lindsey Efird**, daughter of Karen Efird and Mark Efird; battling MPS.
- Gay Ellington**, former co-worker of Martha White; lung cancer.
- Cemita Gibbs**, friend of Laura McLeod.
- Tonia Icenhour**, friend of Kim Caudle; lymphoma.
- Jeannette Isenhour**, sister of Frankie Palmer; COPD.
- Dick Kolk**, friend of Lynn & Martha White.
- Jackie Lynn Krus**, seven year old great-niece of Gloria Bryson.
- Don Little**.
- Pat Long**, aunt of Roger Martin; on-going health concerns.
- Bryanna Medlin**, nine year old diagnosed with Hodgkins Lymphoma.
- Ray Michue**.
- Sam & Melanie Obermiller**, friends of John & Debbie Hahn.
- Barbara Petillo**, friend of Peggy Finley; disabling health problems.
- James Brian Rogers**, son of Jane Rogers; recovering from heart & kidney transplant.
- Karen Russell**, First Baptist Church Wee Care Teacher; breast cancer.
- David Sanges**, brother of Nathan Sanges; recovering from a bone marrow transplant for Acute Myloid Leukemia.
- Garin Stepp**, Duchenne Muscular Dystrophy.
- Connie Watson**, sister of Dan Samples; recovering from a stroke.

Members of the Congregation:

- Blue Honeycutt.**
- Greg Johnson.**
- June Johnson.**
- Pete Smith.**

Church Website Address & Email Addresses

- Church Website Address: www.fpcalbemarle.org
- Church Email Address: klambert@fpcalbemarle.org
- Elizabeth Ayscue: eayscue@fpcalbemarle.org
- Matt Drumheller: mdrumheller@fpcalbemarle.org
- Pam Knighten: pknighten@fpcalbemarle.org
- Kyle Lambert: klambert@fpcalbemarle.org
- Gina Martin: gmartin@fpcalbemarle.org
- Stan Scheer: sscheer@fpcalbemarle.org
- Jane Snyder: jsnyder@fpcalbemarle.org





BIRTHDAYS

JUNE

- | | | | | | |
|-----|---------------------|-----|------------------|-----|-------------------|
| 01- | Barbara Whitley | 11- | Carolyn McLaurin | 25- | Jane Lisk |
| 02- | Iris Coggins | 12- | Merrin Kinley | | Ann Snuggs |
| | Ben Jolly | | Richard Schaefer | 26- | Jim Marshall |
| | Martha Wolf | 13- | John Howell | 27- | Elizabeth Bryson |
| 03- | Heather Deese | | Johnny Howell | | Keith Bryson |
| | Lee Johnson | | Laura Beth Marks | | Elizabeth Hinson |
| | Mary Kesselman | 16- | Janet Schaefer | | Patrick Martin |
| 04- | Ben Newport | 17- | Holland Currie | 28- | Maddox Jolly |
| | Witt Snuggs | | Lynn Poplin | | Sophie Poplin |
| 05- | Sam Griffin | 18- | Mark Mabry | | Robin Lemons |
| | Caroline Lisk | 19- | Jane Boone | 29- | Virginia Marshall |
| | Anne Montgomery | | Marshall Jolly | 30- | Anna Wainwright |
| | Morgan Hall Schultz | | Jack Morton | | |
| 07- | Andy Cotton | | Kassie Taylor | | |
| 10- | John Earnhardt | 20- | Judy Kilgore | | |
| | Jessica Palmer | 22- | Maci Holshouser | | |

JULY

- | | | | | | |
|-----|-----------------|-----|--------------------|-----|------------------|
| 01- | David Hancock | 17- | Matt Carpenter | 26- | William Ivey |
| | Gina Martin | | Michael Laton | | Adam Jolly |
| | Ben McLeod | | Panh Linthavong | 27- | Chris Chapman |
| 03- | Addison Marks | 19- | Owen Johnson | | John Hahn |
| 04- | Don Abernathy | 20- | Hessie Clark | | Ellen Whitley |
| 05- | Rodney Morgan | | Vicki Lynn Lambert | 29- | Dana Burleson |
| 07- | Barbara Lindley | 23- | Jackson Palmer | | Michelle Osborne |
| | Stella Marks | 24- | Beth Poolos | | Marlene Sanges |
| 12- | Jameson Lisk | | Craig Taylor | 31- | James Cotton |
| 13- | Kalyn Caudle | 25- | Bruce Mittendorf | | Maddox Johnson |
| | | | | | Dick Liles |

AUGUST

- | | | | | | |
|-----|-------------------|-----|-----------------|-----|-------------------|
| 01- | Michelle Cumming | 12- | Jerry Caudle | 21- | June Johnson |
| | Madelyn Taylor | | Banks Garrison | 22- | Hannah Domenech |
| 03- | John McIntyre | 13- | Ellis Johnson | 24- | Martha Chapman |
| 04- | Terrie Holshouser | 14- | Salem Taylor | | Adrienne Averette |
| 05- | Caroline McLeod | 15- | Sheryl Stewart | 25- | Jane Hartsell |
| 06- | Phillip Brown | 16- | Kimbal Chapman | 28- | Loni Lambert |
| | Gabriel Beamon | | Elaine Coats | 29- | Bede Karr |
| 07- | Greg Lisk | 18- | Sarah Michael | | Melissa Lemons |
| | Keith Wolf | | Brett Richards | 30- | Myra Land |
| 08- | Leslie Carter | 19- | Mark Andrew | | Alex Wolf |
| | Martha Sue Hall | | Yolanda Johnson | 31- | Heather Kilde |
| | Mellanie Hendrix | | Don Joines | | |
| 09- | Hugh Wainwright | 20- | Jack Boling | | |
| 10- | Patty MacMurray | | Doris Forte | | |
| | Judy Murrell | | Frankie Palmer | | |



ANNIVERSARIES

JUNE

- | | | | | | |
|-----|--|-----|---|-----|---|
| 02- | Ross & Peggy Finley
Jim & Kim Marshall | 15- | Hugh & Debbie Wainwright | 25- | Phillip & Mandy Brown
Bill & Nancy Jolly |
| 04- | Connie & Adrienne Robinson | 18- | Jerry & Kim Caudle | | David & Ellen Whitley |
| 06- | Dennis & Anita Gower | 19- | Andy & Ruth Cotton | 26- | David & Mellanie Morgan |
| 09- | Jim & Margaret Ivey | | Claude & Cathryn Harwood | 27- | Mike & Laura McLeod |
| 12- | Jack & Joan Boling | 23- | Bob & Carol Sasser | | Frank & Beth Poolos |
| 14- | Frank & Mary Green
Sam & Kay Griffin
Marshall & Cam Rogers
Bill & Barbara Lindley | 24- | Ken & Laura Frazier
Jim & Iris Coggins
Glenn & Becky Miller | 28- | Wes & Melissa Eudy |
| | | | | 29- | Connie Wallace & Ken Knight |
| | | | | 30- | Dave & Patty MacMurray |

JULY

- | | | | | | |
|-----|------------------------|-----|---------------------------|-----|--|
| 01- | Roger & Joan Belsan | 11- | Bryson & Michelle Osborne | 28- | Matt & Claire Drumheller |
| 10- | Don & Janice Abernathy | 21- | Kent & Shannon Newport | | John & Heather Kilde
Jim & Mary Louise Sawyer |

AUGUST

- | | | | | | |
|-----|--------------------------|-----|--------------------------|-----|-------------------------|
| 02- | Roger & Jane Lisk | 16- | Johnny & Lauren Howell | 23- | Ben & Liz Jolly |
| 06- | Gus & Pam Holbrook | 17- | Roger & Gina Martin | | Bill & Jane Pickler |
| 07- | Ross & Terrie Holshouser | 18- | Norman & Peggy Rogers | 25- | John & Robin Howell |
| 10- | Al & Kassie Taylor | | Lee & Billie Jean Snuggs | 26- | John & Angie Earnhardt |
| 11- | Bob & Debby Johnston | 20- | Chris & Anissa Chapman | 28- | Stephan & Leslie Kinley |
| 13- | Tommy & Judy Murrell | 22- | Jeff & Jane Harstell | | |

MISSION NEWS...



Feeding the Homeless – Once a Month
Next Meal to be served on Friday, June 3
6:30 p.m.–7:30 p.m.

The Mission Committee would like your help in feeding the homeless once a month at the Community Inn. Often, two to seven homeless folks per night find refuge at the Community Inn. Churches from all over Stanly County provide a meal for them each night. Members of First Presbyterian Church are asked to check the sign-up sheet in the pit stop that lists the dates of the first Friday of each month. Please sign up for one or more months to help with a dish. Even if you are unable to serve, you can sign up to cook. And if you cannot cook, you can sign up to serve. Everyone can help! Next meal will be Friday, June 3.

GARDENING FOR SCCM

!!! ATTENTION VEGETABLE GARDENERS !!!



As you tend your summer vegetable garden, please remember to plant a little extra so that you can share some of the fruits of your labors with members of our congregation as well as the clients at the Stanly Community Christian Ministry. Bring your harvest to the table in the pit stop on Sunday mornings so that folks can have an opportunity to make a purchase. The donations will be sent to SCCM. Whatever vegetables remain will be transported to the SCCM food pantry.

**End-of-the-Year Brunch
for
Central Elementary School Staff
Thursday, June 9 At FPC (Gym)**
Sign-up sheet is on the Mission Bulletin Board.
!!! Your help is needed !!!



The summer months at SCCM find the food pantry in need. Children are home from school and we don't want any of them to go hungry. So, once again, the Mission Committee is asking you to help out by bringing the requested food items and placing them in the appropriate places around the perimeter of the sanctuary. The collection will take place on **July 10th, 17th, and 24th**.

Let's make this the biggest collection ever!

Food item categories are:

- canned meat (tuna, salmon, ham, beef stew)
- canned fruit (**in light syrup**)
- macaroni and cheese/ramen noodles
- cereal, grits, oatmeal
- spaghetti sauce
- canned vegetables (peas, beets, potatoes, mixed vegetables, carrots)
- no green beans or corn are needed



Backpack Food Program

**Last Packing Date for the 2015-2016 School Year!
Wednesday, June 1 at 10:30 a.m. in the pit stop.**

UPDATE ON THE MABUMBU WELL PROJECT



When Richard Lambert left Mwandi in mid-April, the Mabumbu well had been drilled.

He continued to work toward the installation of the solar pump.

Around the first of May, the tower, tank and solar panel had been installed and water was flowing at the Mabumba School.

Richard continues to work with the school officials to ensure that any issues have been addressed.

COMMUNITY INN FUNDRAISER

A Homes of Hope Program

* Stanly County's homeless housing program since 2005*

GOOD OLE' BOYS BBQ!

Friday, August 19th

11:00 am - 6:00 pm

West Albemarle Baptist Fellowship Building
336 Church Street, Albemarle



BBQ Plate - BBQ, slaw, chips, bread, dessert - \$8

BBQ Pound container - \$8

BBQ Tray 6 ½ lbs. - \$48 (1/2 pound free)

Drive-thru. delivery. dine-in

Will deliver within Stanly County with minimum order of 5 plates

Checks should be written to "The Community Inn"



Homes of Hope is a United Way agency.



SNL Monday Morning Missions

Throughout the summer, SNL will gather on Monday mornings at 8:30 a.m. at the church for mission work. We will eat a light breakfast and then do a mission project in the community until lunch time. We will get lunch together and return to the church at about 1:00 p.m. We would love to have you join in the fun! We are also looking for available adults who might be interested in helping out. Please contact Matt Drumheller (mdrumheller@fpcalbemarle.org). Dates for projects are tentatively:

June 20, June 27

July 7, July 11, July 18, July 25

August 1, August 8, August 15

Please keep an eye on your email, as dates may be changed.

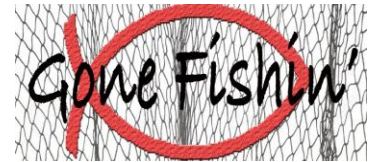
Montreat Youth Conference

Our high school youth are going to be taking part in a Montreat Youth Conference this summer based on the theme "A World of Difference." The trip will take place the week of July 10-16 in Montreat, North Carolina. Youth will spend the week singing, praying, and learning together. They will be joined by Matt Drumheller and Taylor Jolly. Please keep our youth in your prayers this summer as they participate in this time of growth and joy.



Massanetta Springs Middle School Conference

We are attending a new middle school conference this year. This will be at a conference center in Virginia called Massanetta Springs. Using the theme, *Gone Fishin'*, our middle schoolers will be playing games, worshiping, and learning about God at work in their lives. They will be taking Jim Carter and Kristie Bryson with them. Your prayers for safe travel and meaningful time together are greatly appreciated.



Raleigh High School Youth Mission Trip

Some of our high schoolers will be participating in a mission trip to Raleigh. The organization is called Raleigh Youth Mission and is a branch of Asheville Youth Mission. Our youth will be working with local organizations to do a variety of mission project around Raleigh. This trip will be June 19 – June 24. Steve Cumming and Barbara McManus will be going on the trip as well. Please keep this entire group in your prayers as they travel and work in Christ's name.



Scavenger Hunt Recap

On April 24 our middle school and high school youth came to the houses of many of our members to collect food for SCCM. Thanks to the overwhelming generosity of our members, our youth pulled together over **800 pounds** of food. Thank you so much for helping us support this important community ministry.

Trivia Night Recap

On May 1, about 45 people gathered to participate in a night of trivia to benefit SNL's summer trips. Many difficult trivia questions were answered, many laughs were shared, and lots of money was raised to support our youth program. Thanks to all who were able to support us by your generosity and your energy!



June 04 - Witt Snuggs

June 17 - Holland Currie

June 22 – Maci Holshouser

June 30 - Anna Wainwright

July 01 - Ben McLeod

July 16 - Kalyn Caudle

July 20 - Vicki Lynn Lambert

July 26 - Adam Jolly

August 16 - Kimbal Chapman

Graduate Recognition

Sunday, June 5



High school graduates will be recognized in worship on June 7.

They are:

Jenna Biddle, daughter of Lisa Biddle, Gray Stone Day School.

Garrett Chapman, son of Anissa & Chris Chapman, North Stanly High School.

Virginia Currie, daughter of Lisa & Patrick Currie, Gray Stone Day School.

Braden Taylor, son of Kassie & Al Taylor, Gray Stone Day School.

Quinton Wainwright, son of Debbie & Hugh Wainwright, Albemarle High School.

College Graduates:

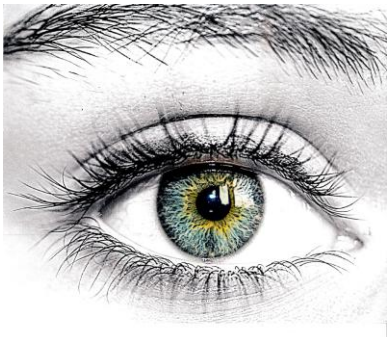
Austin Coats, son of Elaine and Steve Coats, with honors from Pace University with B.F.A. in Commercial Dance.

Jana Sanderson, daughter of Linda Slimick, B.A. in Human Services and a B.A. in Criminal Justice from Gardner-Webb University.

Alix Stewart, daughter of Sheryl & Don Stewart, B.S. in Health Promotion from the University of Georgia School of Public Health. She will continue at the University of Augusta for her Masters in Occupational Therapy.

Graduate School:

Alexander K. Wolf, son of Martha and Keith Wolf, Ph.D. in Analytical Chemistry from the University of Michigan-Ann Arbor.



First Presbyterian Church

Summer Art Gallery Exhibit

Featuring The Art of Photography by Lachlann Currie

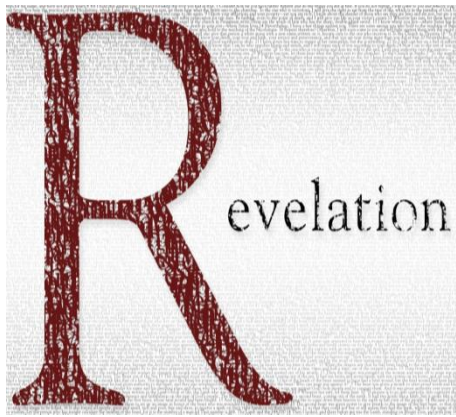
Opening Date on Sunday, June 12

The Art of Photography is a journey of color and inspiration, a visual expression of interest and curiosity. Our own, Lachlann Currie, has taken that journey to create this beautiful collection of photographs, currently on display in the art gallery. Her interest in photography began at University of Mississippi the summer before her 8th grade year, when she attended a two week photography class in order to get out of taking an SAT Prep class. She knew nothing about a camera or photography and she learned the basics, what all the buttons were for and how the camera worked, as well as how to focus correctly. An interesting discovery made was that her vision when she looked through the lens was not focused, which made her realize that she had to over-correct to sharpen the image for it to be clear when it is developed.

Lachlann enjoys taking photographs of random, colorful, stationary objects, rather than people. She becomes impatient with live subjects and feels that they are much more difficult to photograph. One of the most unusual subjects she has photographed was a big spider. On a field trip to a museum during the photography class, the group made a stop along the roadside to take a closer look at a vast collection of bathtubs. She managed to locate an interesting tub, complete with a large spider and was encouraged to photograph it. She had to use four micro-lenses, which allow the camera to zoom further and the image sharper, in order to get a great shot of it and that image is a part of this exhibit.

Photography has made Lachlann much more observant and now she notices details everywhere she looks. She also thinks about what she can take a picture of next and says she never envisioned herself as an “artsy” person who takes pictures of things that attract her attention. Now she has a clear passion for photography and the art pieces she can create as a result.

Lachlann is a rising sophomore at Carolina Christian School in Locust and enjoys volleyball, snow skiing and creative writing. She hopes to embrace this love of writing and photography next year and become part of the Yearbook staff at her school. She resides in Albemarle with her parents, Patrick and Lisa, two sisters, Virginia and Holland, brother Angus and poodle, Patagonia.



Summer Study on the Book of Revelation

- When?** Monday, June 27 5:30 p.m.-8:30 p.m.
Monday, July 25 5:30 p.m.-8:30 p.m.
- What?** We'll gather twice during the summer for in-depth conversation about the revelation which John received. We'll discuss various interpretations, bring questions, and dig deeper into several texts.
- What else?** Matt and Elizabeth will lead these sessions together. You can come for one or for both.

We'll have a light supper together. Donations accepted for the meal. We need sign-ups by the Friday before the class so we can plan adequately for food and supplies.

LEMONADE ON THE LAWN SUNDAY, JULY 24 & SUNDAY, AUGUST 14 FOLLOWING 10:00 A.M. WORSHIP





- Summer Vespers & Homemade Ice Cream**
- 7:00 p.m. on Sunday, July 10 at the home of Connie Wallace & Ken Knight (32034 Valley Drive, Albemarle)
- 7:00 p.m. on Sunday, August 21 at the home of Robin & John Howell (20959 Old Aquadale Road, Albemarle)

We'll gather for summer vespers and ice cream (let us know what kind you're bringing). We will sing, pray, and read scripture together.

The Mary & Martha Center for Women and Community Care

- What is it?** The vision of the center is to become the house of care, compassion and friendship to females in times of crisis and life transitions. They offer referral, counseling, and empowerment services that will assist women (and their partners) through life's challenges. Spiritual direction is also available.
- Where is it?** The center is located at 243 North 2nd Street. Phone: 704-983-7785
- When is it open?** Mondays & Wednesdays from 9:00 a.m.-4:00 p.m. for referral
Tuesdays & Thursdays from 11:00 a.m.-8:00 p.m. for counseling
Some programs may be offered at other times.
- What else?** Counseling is fee based and offered on a sliding scale. Our Kim Marshall serves on the founding board of the Mary & Martha Center and will be happy to provide additional information (bookworm284@live.com or (704) 983-1378).



Summer Movie Night Wednesday, June 29 at 7:00 p.m. in the gym **Zootopia**

- From Walt Disney Animation Studios comes a comedy-adventure set in the modern mammal metropolis of Zootopia.
- Enjoy this hilarious adventure full of action, heart and tons of bonus extras that take you deeper into the world of Zootopia.
- It's big fun for all shapes and species!
- Bring the entire family out to enjoy a movie with friends, popcorn, candy & drinks...
- *Bring a chair or blanket and plan to relax and laugh out loud!!!

FAMILY TARTANS

Mark the date of July 17 for Scottish Communion/Kirkin' of the Tartans. If you would like to purchase your family tartan (to be made into a flag for the day), contact Don Abernathy (704-982-8253 or DABernathy@vnet.net).



Shortbread Bakers Needed

Shortbread bakers are needed for Scottish Communion on July 17. If you can help by making a batch, sign-up on the bulletin board in the pit stop or contact Mark Donham (919-702-8733 or mndonham1@nc.rr.com) or Penny Morton (704-985-8239 or mortonpen@gmail.com).

Endowment Committee Grants

The Endowment Committee will accept applications for grants from the Gaither Endowment until July 15. Applications are available in the church office. If you have questions, contact the church office (704-982-2722 or klambert@fpcalbemarle.org). Applications may be submitted by individual church members or committee chairpersons. Once funding requests are received, the

Endowment Committee will review the applications and determine which requests will be funded. Personal interviews may be requested if further information is needed regarding a funding request.

If you have questions about the application process, please contact the office. Endowment Committee members include: Patrick Currie, Chair; Ronnie Michael, Sandy Saunders, Ellen Snyder, Martha Wolf, Elizabeth Ayscue, ex-officio, Bob Gaither, ex-officio, and Lee McLaurin, ex-officio.

**SCOTTISH COMMUNION
AND
KIRKIN' O' TARTANS**

SUNDAY, JULY 17

10:00 A.M.

FIRST PRESBYTERIAN CHURCH

Portland 2016



**A Retrospective on the PCUSA's General Assembly
Sunday, July 24 at 11:00 a.m. in the parlor**

Matt will represent the Presbytery of Charlotte as a commissioner to this summer's General Assembly which begins on June 18 in Portland, Oregon. After the dust settles on the General Assembly's decisions, join Matt for conversation about the decisions made, and the joys and challenges of being a commissioner.

WORSHIP WORKSHOP FOR CHILDREN

SUNDAY, AUGUST 28

A workshop for children in grades 3 through 5 and their parents is planned for Sunday, August 28 following worship. We will share lunch together in the pit stop, followed by activities that introduce the elements of worship and help children to participate and delight in worshipping God. The goal is to equip children to grow in the community of faith and form a deeper relationship with God through regular worship. Plans are to finish up around 1:30 p.m. Please let the church office (klambert@fpcalbemarle.org or 704-982-2722) know if you and your child plan on attending.

Labor Day Worship

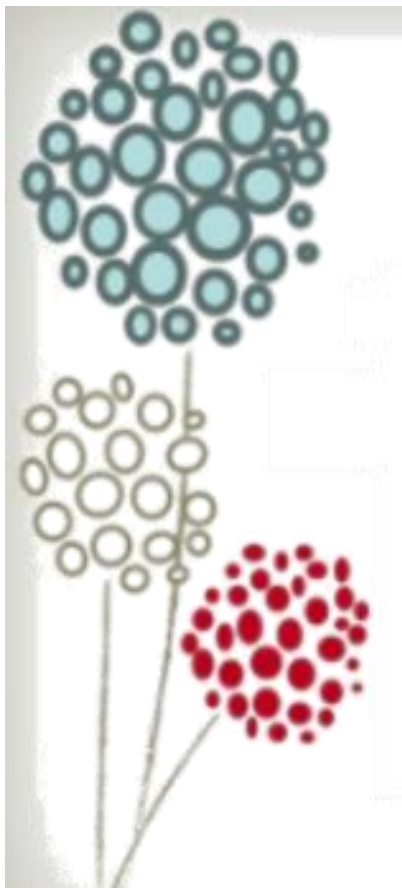
YMCA Pavillion

Sunday, September 4

at 10:00 a.m.

We'll worship together at the YMCA park and revel in the sights and sounds of God's good creation. Following worship, the Fellowship Committee will provide light breakfast refreshments.

Worship focus will be on the places we've seen and/or experienced the work of God and the presence of the Holy Spirit during the summer.



Women's Retreat
September 23-25
William Black Lodge
Montreat, North Carolina

To make your reservation, a \$75 deposit is requested by July 15.

Save the Date for Rally Day 2016

Sunday, September 11

9:30 am

"Everything Dots"

The Christian Education Committee is planning an event to kick off the new year in Christian Education.

You are encouraged to think creatively and **Do One Thing** to Better God's world.
Plan to enjoy a morning of food, fun and fellowship...





Countdown to the Community Christmas Dinner Sunday, December 25

Once again, First Presbyterian Church will host the Community Christmas Dinner! Be on the lookout for the establishment of our church committee (in the early fall) so that you and your family can be a part of this wonderful community event. Christmas Day will be here soon!

For more information, contact one of the coordinators for this event:

Martha Sue Hall
Mary Kesselman
Sandy Saunders

(704-985-5821 or hallmsh@hotmail.com)
(704-982-6754 or manapier@msn.com)
(704-982-3845 or swsaunders63@gmail.com)

OH HELLO,
June.

Wednesday, June 1

- 6:30 am Toby Webb Men's Prayer Breakfast
- 10:30 am Backpack Food Program
- 12:00 pm Prayer Shawl Ministry (parlor)
- 8:30 pm Pick-up Basketball

Thursday, June 2

- 10:00 am Staff Meeting

Friday, June 3

Summer Friday - Church Office Closed

Around the Clock Softball Tournament

- 6:30 pm-7:30 pm Meal at the Community Inn

Saturday, June 4

Around the Clock Softball Tournament

Sunday, June 5

Recognition of High School Seniors/The Sacrament of Baptism

Ten-Cents-A-Meal

- 9:00 am *Chancel Choir Rehearsal
- 10:00 am *Worship
- 11:00 am Meeting for the 2016 Music & Arts Camp Volunteers (Session Room)

Monday, June 6

- 7:00 pm Circle #5 meets at the home Gloria Bryson (811 Smith Street, Albemarle)
- 8:30 pm Pick-up Basketball

Wednesday, June 8

- 6:30 am Toby Webb Men's Prayer Breakfast
- 8:30 pm Pick-up Basketball

Thursday, June 9

End of the Year Brunch for Central School Staff

- 10:00 am Staff Meeting

Friday, June 10

Summer Friday - Church Office Closed

Saturday, June 11

Community Table

Sunday, June 12

Guest Preacher: Dr. Brian Blount

Deadline for Father's Day Flower Arrangement Form

- 9:00 am *Chancel Choir Rehearsal
- 9:00 am *Diaconate
- 10:00 am *Worship
- 11:00 am Reception for Dr. Brian Blount (pit stop)
- 2:00 pm-5:00 pm Music & Arts Camp
- 7:00 pm Session

Monday, June 13

- 9:00 am-12:00 pm Music & Arts Camp (Ages 4-5)
- 9:00 am-2:00 pm Music & Arts Camp (Grades K-6)

Tuesday, June 14

- 9:00 am-12:00 pm Music & Arts Camp (Ages 4-5)
- 9:00 am-2:00 pm Music & Arts Camp (Grades K-6)

*childcare provided



Wednesday, June 15

- 9:00 am-12:00 pm Music & Arts Camp (Ages 4-5)
- 9:00 am-2:00 pm Music & Arts Camp (Grades K-6)
- 8:30 pm Pick-up Basketball

Thursday, June 16

- 9:00 am-12:00 pm Music & Arts Camp (Ages 4-5)
- 9:00 am-2:00 pm Music & Arts Camp (Grades K-6)
- 7:00 pm *Music & Arts Camp Finale Performance with Ice Cream Social following in the gym

Friday, June 17

Summer Friday - Church Office Closed

Sunday, June 19

Father's Day

Presbyterian Homes Mother's Day/Father's Day Offering

- 9:00 am *Chancel Choir Rehearsal
- 10:00 am *Worship

Monday, June 20

- 8:30 am-1:00 pm SNL Monday Morning Mission
- 9:00 am-1:00 pm Cooking Camp

Tuesday, June 21

- 9:00 am-1:00 pm Cooking Camp

Wednesday, June 22

- 9:00 am-1:00 pm Cooking Camp

Thursday, June 23

- 9:00 am-1:00 pm Cooking Camp

Friday, June 24

Summer Friday - Church Office Closed

Sunday, June 26

- 9:00 am *Chancel Choir Rehearsal
- 10:00 am *Worship

Monday, June 27

- 8:30 am-1:00 pm SNL Monday Morning Mission
- 8:30 pm Pick-up Basketball

Wednesday, June 29

- 6:30 am Toby Webb Men's Prayer Breakfast
- 7:00 pm Summer Movie Night...Zootopia

Thursday, June 30

- 10:00 am Staff Meeting

*childcare provided



**Raleigh Youth Mission for High Schoolers
June 19-24**

**Middle School Conference at Massanetta Springs
June 21-24**



Friday, July 1

Summer Friday – Church Office Closed

6:30 pm-7:30 pm Meal at the Community Inn

Sunday, July 3

Ten-Cents-A-Meal Offering

10:00 am *Worship

Monday, July 4

Independence Day/Church Office Closed

Wednesday, July 6

6:30 am Toby Webb Men’s Prayer Breakfast

8:30 pm Pick-up Basketball

Thursday, July 7

8:30 am-1:00 pm SNL Thursday Morning Mission

10:00 am Staff Meeting

Friday, July 8

Summer Friday – Church Office Closed

Sunday, July 10 *Circle the Sanctuary*

10:00 am *Worship

7:00 pm Summer Vespers at the home of Connie Wallace & Ken Knight (32034 Valley Drive, Albemarle)

Monday, July 11

8:30 am-1:00 pm SNL Monday Morning Mission

8:30 pm Pick-up Basketball

Wednesday, July 13

6:30 am Toby Webb Men’s Prayer Breakfast

8:30 pm Pick-up Basketball

Thursday, July 14

10:00 am Staff Meeting

Friday, July 15

Summer Friday – Church Office Closed

Deadline for Endowment Grant Applications

Sunday, July 17

Scottish Communion and Kirkin’ of the Tartans

Circle the Sanctuary

10:00 am *Scottish Communion & Kirkin’ of the Tartans

Monday, July 18

8:30 am-1:00 pm SNL Monday Morning Mission

8:30 pm Pick-up Basketball

*childcare provided



Wednesday, July 20

6:30 am Toby Webb Men’s Prayer Breakfast

8:30 pm Pick-up Basketball

Thursday, July 21

10:00 am Staff Meeting

Friday, July 22

Summer Friday – Church Office Closed

Sunday, July 24

Circle the Sanctuary

Lemonade on the Lawn

10:00 am *Worship

Monday, July 25

8:30 am-1:00 pm SNL Monday Morning Mission

8:30 pm Pick-up Basketball

Wednesday, July 27

6:30 am Toby Webb Men’s Prayer Breakfast

8:30 pm Pick-up Basketball

Thursday, July 28

10:00 am Staff Meeting

Friday, July 29

Summer Friday – Church Office Closed

Sunday, July 31

Faith on the Fifth Offering

10:00 am *Worship

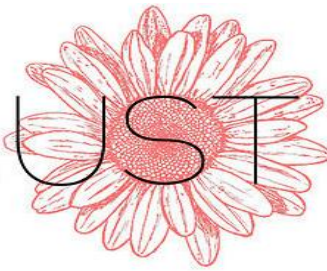
*childcare provided

Montreat High School Youth Conference
July 10-16

Mission Trip to Montaña de Luz
July 13-20

Oh hello,

AUGUST



Monday, August 1

8:30 am-1:00 pm SNL Monday Morning Mission

8:30 pm Pick-up Basketball

Wednesday, August 3

6:30 am Toby Webb Men's Prayer Breakfast

5:30 pm Community Christmas Dinner Representatives

8:30 pm Pick-up Basketball

Thursday, August 4

10:00 am Staff Meeting

Friday, August 5

Summer Friday – Church Office Closed

6:30 pm-7:30 pm Meal at the Community Inn

Sunday, August 7

10:00 am *Worship

Monday, August 8

8:30 am-1:00 pm SNL Monday Morning Mission

8:30 pm Pick-up Basketball

Wednesday, August 10

6:30 am Toby Webb Men's Prayer Breakfast

8:30 pm Pick-up Basketball

Thursday, August 11

10:00 am Staff Meeting

Friday, August 12

Summer Friday – Church Office Closed

Sunday, August 14

Guest Speaker: Rev. Sharon Bryant

PCUSA Mission Co-worker in Thailand

Lemonade on the Lawn

9:00 am *Diaconate

10:00 am *Worship

6:00 pm Worship Committee

7:00 pm Session

Monday, August 15

8:30 am-1:00 pm SNL Monday Morning Mission

Tuesday, August 16

12:00 pm September Newsletter Deadline

Wednesday, August 17

6:30 am Toby Webb Men's Prayer Breakfast

8:30 pm Pick-up Basketball

Thursday, August 18

10:00 am Staff Meeting

Friday, August 19

Summer Friday – Church Office Closed

11:00 am-6:00 pm Community Inn BBQ Fundraiser at
West Albemarle Baptist Church
(336 Church Street, Albemarle)

***childcare provided**



Sunday, August 21

10:00 am *Worship

7:00 pm Summer Vespers at the home of Robin & John Howell
(20959 Old Aquadale Rd., Albemarle)

Monday, August 22

7:00 pm Community Christmas Dinner Steering Committee

8:30 pm Pick-up Basketball

Wednesday, August 24

6:30 am Toby Webb Men's Prayer Breakfast

8:30 pm Pick-up Basketball

Thursday, August 25

10:00 am Staff Meeting

Friday, August 26

Summer Friday – Church Office Closed

Sunday, August 28

11:00 am *Worship

Monday, August 29

Church Office Closed

7:00 pm Circle #5 meet at the home of Sally Grantier
(522 Avondale Avenue, Albemarle)

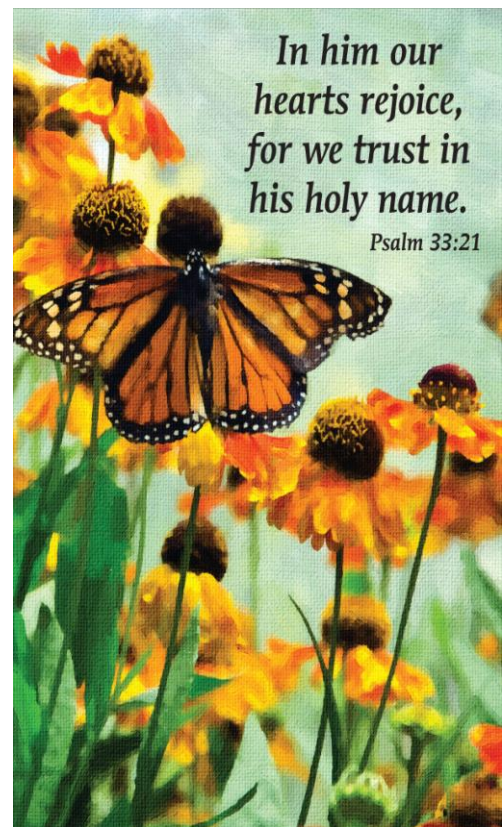
8:30 pm Pick-up Basketball

Wednesday, August 31

6:30 am Toby Webb Men's Prayer Breakfast

8:30 pm Pick-up Basketball

***childcare provided**



THOSE WHO SERVE IN JUNE

Ushers: Jim Hesley, captain; Duncan Bryson, Keith Bryson, Banks Garrison, Jim Ivey, Robert Ivey, Sandy Saunders, Harold Sharpe, Joe Snuggs, and Elizabeth Wilson

Elder Greeters:

June 5: Ellen Snyder; Bob Johnston

June 12: Ellen Snyder; Mary Kesselman

June 19: Ellen Snyder; Lynn White

June 26: Ellen Snyder; Lynn White

Nursery Room:

June 5: Jana Sanderson

June 12: Misty Honbarrier (Diaconate)

June 19: Caroline Snyder

June 26: Caroline Snyder

Nana & Papa Team:

June 5: Joan Belsan; Debby Johnston

June 12: Mary & Frank Green

June 19: Barbara & Bill Lindley

June 26: Chris Mabry

Acolytes:

June 5: Graham Chapman

June 12: Blake Taylor

June 19: Ethan Richards

June 26: Angus Currie

Toddler Room:

June 5: Misty Honbarrier

June 12: Cora Harrison (Session)

June 19: Cici Ly

June 26: Cora Harrison

Preschool Partners:

June 5: Melissa Eudy; Dona Lisk

June 12: Heather & John Kilde

June 19: Jessica & John Palmer

June 26: Angie Earnhardt; Adrienne Averette; Kelly Lentz

Children's Church for June:

June 5: *No Children's Church*

June 12: Leah Beamon; Jacob Palmer

June 19: Laura Beth Marks; Addison Marks; Jacob Palmer

June 26: TBA

THOSE WHO SERVE IN JULY

Ushers: John Howell, captain; Brad Boone, Lee Boone, Bill Hall, Robin Howell, Adam Jolly, Jack Morton, Penny Morton, and Ellen Snyder

Elder Greeters: Debbie Bennett; Jim Carter

Nursery Room:

July 3: Misty Honbarrier

July 10: Jana Sanderson

July 17: Cora Harrison

July 24: Misty Honbarrier

July 31: Jana Sanderson

Toddler Room:

July 3: Anna Wainwright

July 10: Cora Harrison

July 17: Cici Ly

July 24: Anna Wainwright

July 31: Cora Harrison

Nana & Papa Team:

July 3: Carroll Sitton

July 10: Susan & Banks Garrison

July 17: Sarah & Ronnie Michael

July 24: Teresa Taylor; Shirley Welch

July 31: Bede & Russell Karr

Preschool Partners:

July 3: Penny & Jack Morton

July 10: Stephanie & Josh Campbell

July 17: Jill Neibler; Isabel McLeod

July 24: Leah Beamon; Heather Deese

July 31: Laura McLeod; Ben McLeod

Acolytes:

July 3: Andy McLeod

July 10: Leah Kilde

July 17: Morgan Kinley

July 24: Katherine Jolly

July 31: Kimbal Chapman

No Children's Church for July

THOSE WHO SERVE IN AUGUST

Ushers: Heather Kilde, captain; Jim Carter, Michelle Cumming, David Kilde, Ben McLeod, Isabel McLeod, Mandy & Phillip Brown

Elder Greeters: Peggy Finley; Keith Bryson

Nursery Room:

August 7: Caroline Snyder

August 14: Jana Sanderson (Diaconate)

August 21: Jana Sanderson

August 28: Caroline Snyder

Toddler Room:

August 7: Misty Honbarrier

August 14: Misty Honbarrier (Session)

August 21: Cici Ly

August 28: Cora Harrison

Nana & Papa Team:

August 7: Joan Belsan; Debby Johnston

August 14: Mary & Frank Green

August 21: Barbara & Bill Lindley

August 28: Chris Mabry

Preschool Partners:

August 7: Melissa Eudy; Dona Lisk

August 14: Heather & John Kilde

August 21: Jessica & John Palmer

August 28: Angie Earnhardt; Adrienne Averette; Kelly Lentz

Acolytes:

August 7: David Kilde

August 14: Duncan Bryson

August 21: Graham Chapman

August 28: Angus Currie

No Children's Church for August

SUMMER FRUIT PIZZA



Celebrate summer with this tasty dessert pizza, using your favorite summer fruits as the toppings.

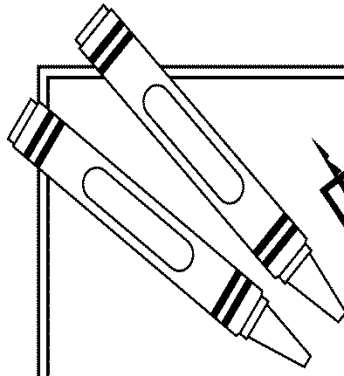
What you need:

- 1 tube slice-and-bake sugar cookie dough
- Knife
- Round pizza pan
- 8 ounces cream cheese
- 1/3 cup sugar
- 1/2 teaspoon vanilla
- 2 cups sliced fruit
- Adult help



What you do:

1. Cut the dough into slices 1/8-inch thick. Place slices on the pan, overlapping them slightly.
2. Bake at 375 degrees for 12 minutes. Let cool.
3. Combine softened cream cheese, sugar and vanilla, mixing well. Spread this "frosting" over the baked-cookie "crust."
4. Arrange fruit on top of the pizza.
5. Slice and enjoy!

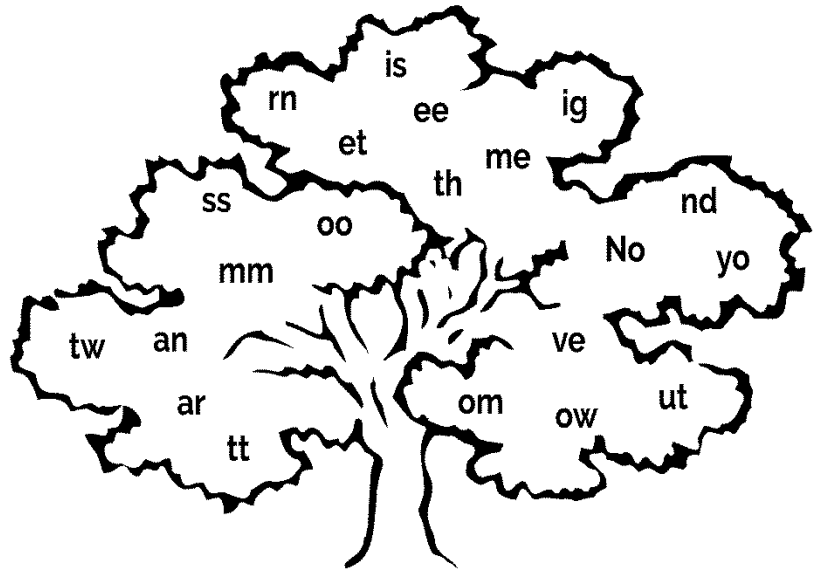


PUZZLE

Signs of summer

Jesus told his disciples that fig trees indicate when summer is approaching.

Directions: Complete the Bible verse below by placing the letter pairs from the tree into the correct blanks.



" ___ w lea ___ th ___ le ___ on
fr ___ the f ___ tr ___: As s ___ n
as its ___ igs g ___ te ___ er ___ d
its lea ___ s co ___ o ___, ___ u
kn ___ ___ at su ___ er is ne ___."

Ma ___ hew 24:32, NIV

Answer: "Now learn this lesson from the fig tree: As soon as its twigs get tender and its leaves come out, you know that summer is near."
Matthew 24:32, NIV

Happy Sunshine Cupcakes

Psalm 144:15 says, "Blessed [or happy] are the people whose God is the LORD." Make these bright cupcakes to remember all the ways God makes you happy.



What you need:

- Adult help
- Cake mix
- Cupcake liners
- White frosting
- Yellow food coloring
- Black frosting or tube gel
- Candy corn

What you do:

1. Make cupcakes by following directions on the box. Let them cool completely.
2. Stir yellow food coloring into white frosting, making it as yellow as the sun. Frost the cupcakes.
3. Using black frosting, make a happy face on each cupcake.
4. Around each cupcake, place candy corn with points out to resemble sun rays. Enjoy!



In Matthew 5:3-10, Jesus begins his teaching with the Beatitudes. They give us many reasons to be happy. The Greek word for blessed, *makarios*, also means happy!

Directions: Complete the Beatitudes by matching the blanks in each "Happy" phrase on the left with the bold word(s) on the right.

1. "Happy are the **POOR**
IN SPIRIT

hunger and thirst for righteousness, for they will be filled."

2. "Happy are those who _____

pure in heart, for they will see God."

3. "Happy are the _____

peacemakers, for they will be called the children of God."

4. "Happy are those who _____

persecuted because of righteousness, for theirs is the kingdom of heaven."

5. "Happy are the _____

poor in spirit, for theirs is the kingdom of heaven."

6. "Happy are the _____

merciful, for they will be shown mercy."

7. "Happy are the _____

meek, for they will inherit the earth."

8. "Happy are those who are _____

mourn, for they will be comforted."