



# FIRST PRESBYTERIAN CHURCH NEWSLETTER

Albemarle, North Carolina

Reverend Cathy George, Transitional Pastor

Frank Poolos, Director of Vocal and Handbell Music

Stan Scheer, Organist

Jane Snyder, Director of Fellowship & Congregational Care

Gina Martin, Interim Director of Christian Education

Kyle Lambert, Office Manager

Pam Knighten, Secretary

Church Office: (704) 982-2722

Website: [www.fpcalbemarle.org](http://www.fpcalbemarle.org)

E-mail: [klambert@fpcalbemarle.org](mailto:klambert@fpcalbemarle.org)

\*\*\*\*\*

## November 2021

*The View from Where I Sit*



Dear Friends,

First of all, I can't believe that November is here. If somebody finds the summer I lost, please return it to me. I missed it altogether. But, I guess whining won't change the fact that fall is here, the new program year has begun, committees are up and running, and Stewardship season is winding down. It's November, all right and Thanksgiving is on its way. And as is typical of me this time of year, I've been thinking a lot about giving. Actually, I've been thinking a lot about giving and receiving.

At the heart of Scripture is the transforming affirmation that we, all of us, are receivers and givers. In fact, receiving and giving are at the heart of what it means to be human. God gives and we give. For God so loved the world God gave us Jesus Christ; and because we believe that God is the greatest giver of all, it's impossible to speak of our faith without speaking of giving.

At the heart of Scripture is a related affirmation that in life and in death we belong to God, which we say often as part of our worship. One ethicist claims that there are two areas in life in which we discover how much we trust God – in how we live and in how we die. She says that 'the practice of the first (giving) helps us to get ready for the second (dying).'

Who are we? By God's grace, we are receivers and we are givers. And, the transformational and redemptive experiences of receiving and giving are at the heart of our spiritual development, our human dignity and meaning, our sense of personal integrity.

I heard a story once of a time when the elders of a church wanted their pastor to call on a widow in their parish. As the mother of 6 children, she was putting into the treasury of their church \$4.00 each month – a tithe of her meager income. When the pastor called on her, he told her, as properly as he could, that he and the officers were relieving her of the impossible responsibility of giving. As he spoke, tears came into her eyes. She said, "I want to tell you that you are trying to take away the last thing that gives my life dignity and meaning."

Who am I? Who are you? Who are we? By the amazing grace of God, we are receivers and we are givers. And to each of us God says: 'Give your lives to me. Be my faithful stewards and servant church. Be my non-timid people; and I will bring forth from you and from First Presbyterian Church what you have in you to become.'

Seriously, if you find my summer...

Grace and Peace,

Cathy

\*\*\*\*\*

### NAME TAG ALERT!

Upon entering the sanctuary, we are requesting that everyone make a name tag.

Stick-on name tags are available at both entrances to the sanctuary.

Thanks!



TOGETHER, CALLED TO DISCIPLESHIP



From the Stewardship Committee...

**Consecration Sunday is  
November 7.**

**Plan to return your pledge card.**

Pledge packets have been mailed. Please prayerfully consider increasing your pledge for 2022. If you do not always pledge, please do so this year so that a more accurate budget can be presented to the congregation.

\*\*\*\*\*

## **IMPORTANT COVID UPDATED INFORMATION BEGINNING NOVEMBER 7**

For the health and welfare of our members and our community, the COVID Task Force Committee has set the following guidelines with the following updates:

- ❖ **UPDATE:** Masks are **optional** for ALL FPC **indoor** functions/activities/SS/Worship, etc.
- ❖ **UPDATE:** Masks are **strongly encouraged** for unvaccinated individuals.
- ❖ Masks will always be provided at the church for adults and children in case they are needed.
- ❖ After worship, Rev. George will stand outside the door at the sanctuary so “crowding” will not take place.
- ❖ Hand sanitizer is available. Please use it.
- ❖ **UPDATE: Bibles, Hymnals, and Friendship Registers will be returned to pews.**
- ❖ Singing will continue.
- ❖ Communion will be given with prepackaged elements.
- ❖ **UPDATE: Elder greeters will resume.**
- ❖ **UPDATE: Ushers will resume passing offering plates during Worship.**
- ❖ All volunteers and paid employees involved in any children’s program(s) are required to be vaccinated.
- ❖ **UPDATE: Church building and GYM will be available for outside groups (meetings, rentals, pickleball, basketball, etc.).**
- ❖ **UPDATE: Meals may resume for SNL.**
- ❖ All toys, chairs, tables and bathrooms, (used that day) are to be wiped clean with a Clorox wipe or sprayed and wiped clean.
- ❖ First Family meals will be drive-thru
- ❖ Church Committees, Community Committees/groups are welcome to use the main building for meetings. However, any child that might accompany a parent to a meeting must stay in the same room with the parent at all times.
- ❖ All surfaces (chairs and tables and bathrooms if used) have to be wiped clean (with spray or wipes) after any committee meets.

Your patience and flexibility are appreciated as we continue to deal with the pandemic.

**The COVID Task Force and Session continue to assess the COVID situation and return to church activities with the safety of the congregation in mind.**

If you have questions, please do not hesitate to contact the church office (704-982-2722).

COVID TASK FORCE: Ellen Snyder, Debbie Bennett, Ben Jolly, Bob Johnston

# WORSHIP

Sunday, November 7

**Consecration Sunday and All Saints Day/The Sacrament of the Lord's Supper/  
Ten-Cents-A-Meal Offering for Hunger**

We'll work *Together, Called to Discipleship* by making our financial commitments to the church and our personal commitments to Jesus Christ. We will celebrate the saints of First Presbyterian Church who have entered the Church Triumphant since the last All Saints Day and the other saints of our lives. Also, we will celebrate the Sacrament of the Lord's Supper and receive the Ten-Cents-A-Meal offering for hunger.

Sunday, November 14

**Dedication of Operation Christmas Child Shoeboxes**

Bring your shoeboxes on this Sunday for dedication.

Sunday, November 21

**Christ the King Sunday/Thanksgiving Offering for Children's Hope Alliance**

Sunday, November 28

**First Sunday of Advent/The Sacrament of the Lord's Supper/  
Lighting of the candle of Hope**

\*\*\*\*\*

# 10 CENTS A MEAL

We will receive the Ten-Cents-A-Meal offering for hunger on November 7. This monthly offering is used by the Presbytery of Charlotte to fund hunger programs and agencies (including SCCM) throughout the presbytery. We received a total of \$87.00 for Ten-Cents-A-Meal for September 2021.

\*\*\*\*\*



## All Saints Day Sunday, November 7

On November 7, we remember all those who have gone before us. The Worship Committee will provide an opportunity for you to remember the saints who have paved the way in faith.

\*\*\*\*\*

## Christian Education Intergenerational Event Sunday, November 14 9:45 a.m. in the Gym



When people of all ages have the opportunity to share time together, wonderful things happen . . . friendships are formed, busy families spend quality time together through faith, and generation gaps narrow. The Christian Education Committee is planning an Intergenerational Event on Sunday, November 14 at 9:45 a.m. in the gym. Please plan to join us for this enjoyable time of fellowship!



\*\*\*\*\*

## *Save the Date for the Joy Program Sunday, December 12 at 11:00 a.m.*

The Youth Club children will present the Joy Program during worship on December 12. The Joy Program is called, *O Come Let Us Adore Him*. While the story will be well-known, and the songs will be familiar, you will notice a few new twists on your favorite Christmas carols. Our children will tell us the age-old story of faith.





# Hanging of the Christmas Greenery Saturday, November 27 from 10:00 a.m.-Noon

On Saturday, November 27, we will decorate the church for the season. Plan to spend the morning decorating the Christmas tree and other areas of our church. The church will look beautiful for the first Sunday of Advent (November 28)!

\*\*\*\*\*

## OPERATION CHRISTMAS CHILD SHOEBOX MINISTRY

The green and red shoeboxes are available for pick-up on the pew in front of Jane's office. A brochure is included in the box with the most recent information about packing a box. Please read what gifts can be included in the box. Boxes need to be returned to the church by Sunday, November 14. Remember that shoeboxes are distributed by churches in over 100 countries who will nurture the child in their faith. As you pack your box, pray for the child who will receive it along with the gospel printed in their own language. It has been estimated that thirty or more family members and friends will also read and receive the good news through the booklet. It will be the greatest GIFT they ever receive! (And we ever share!)



\*\*\*\*\*



## Angel Tree 2021

It will not be long before you will see our Angel Tree back in the Pit Stop, adorned with paper angels. They represent the Christmas wishes of Central Elementary School students and their siblings which would otherwise not be fulfilled. Each year, members and friends of this congregation have been very generous in their response to this program. In a few weeks, you will be informed when the tree is up, details in selecting an *angel*, and the deadline for return of the gifts to the church. Should you have any questions, please contact Peggy Finley at 704-985-1136 or maf447@windstream.net.

\*\*\*\*\*



## Alternative Christmas Gifts Available in the Pit Stop Sundays, November 21 & 28 and Sundays, December 5 & 12

On Sundays, November 21 & 28, December 5 & 12, there will be opportunities to purchase alternative gifts in the Pit Stop. You will be able to select from among both local and international recipients. For each purchase, you will receive one of several holiday-themed acknowledgement cards. The charities are: John P. Murray Community Care Clinic, Mwandi Milk Formula, OASIS, and Will's Place.

\*\*\*\*\*



## DRIVE-THRU COMMUNITY CHRISTMAS DINNER AT FIRST LUTHERAN CHURCH (230 SOUTH 2<sup>ND</sup> ST, ALBEMARLE) SATURDAY, DECEMBER 25 FROM 11:00 A.M.-1:00 P.M.

The Annual Community Christmas Dinner is still ON for this year. It will again be a DRIVE-THRU on Christmas Day (Saturday, December 25). The food will be prepared and packaged by Golden Corral in Asheboro. All of the desserts are being provided by the Albemarle Sweet Shop, and all of the volunteers will be from First Lutheran. The only things we are being asked to provide are 100 Christmas Cards and the monetary donation to help cover the cost of the meals (\$625.00) from First Presbyterian Church. Please help us meet this goal by:

1. Giving Generously to the Community Christmas Dinner (in the memo of your check designate "Community Christmas Dinner").
2. Gina Martin, our Interim Director of Christian Education, will have the children color the Christmas cards this year.

CONTACT MARTHA SUE HALL FOR MORE INFORMATION  
(704-985-5821 OR HALLMSH@HOTMAIL.COM)

# STEWARDSHIP AND SUCH...SEPTEMBER 2021 FINANCIAL REPORT

## GENERAL FUND

<b>Actual:</b>	<u>Year to Date</u>	<u>Budget-to-Date</u>
Total Income Received:	329,170.00	392,359.00
Total Expenses:	<u>315,665.00</u>	<u>395,435.00</u>
(Shortage)/Surplus	13,505.00	(3,076.00)

## GENERAL FUND BUDGET 2021

Pledges:	466,936
Total Income:	523,978
Total Expenses:	523,978

Weekly Amount Needed to Keep Commitments: \$10,076

We are behind \$12,221.00 in pledges.

Average Weekly Amount Received in September: \$6,698

Ten-Cents-A-Meal for September: \$87.00

\*\*\*\*\*



## 2021 Thanksgiving Offering for Children's Hope Alliance Sunday, November 21 *Hope. Health. Healing.*

Children's Hope Alliance is the combination of Barium Springs and Grandfather Home for Children joining forces to serve children and families throughout North Carolina. The mission is to provide hope, health, and healing for generations. With a variety of comprehensive services and programs, Children's Hope Alliance gives hope to North Carolina's children by providing a safe home, healing their hurt, and encouraging a healthy start. Ways to give:

1. Write a check (in the memo designate Children's Hope Alliance), place in the offering plate at either sanctuary entrance, or mail to:  
First Presbyterian Church  
P.O. Box 1578  
Albemarle, NC 28002
2. Donate online at [childrenshopealliance.org](http://childrenshopealliance.org) and press the "DONATE" button.

\*\*\*\*\*



## Christmas Joy Offering Sunday, December 12

*Each year during the Advent and Christmas season,  
we turn our eyes to Bethlehem and celebrate the  
wondrous gift of Jesus Christ, our Savior.*

The Christmas Joy Offering has been a cherished Presbyterian tradition since the 1930's. The Christmas Joy Offering opens doors of opportunity which lead to hopeful futures for young people at Presbyterian-related schools and colleges equipping communities of color. When we give to the Christmas Joy Offering, we share our love

with the leaders of our Church-past, present, and future-who point us to God. This has been a Presbyterian commitment for nearly 140 years.

### Ways to give:

1. Write a check (in the memo designate Christmas Joy Offering), place in the offering plate at either entrance to the sanctuary, or mail to:  
First Presbyterian Church  
P.O. Box 1578  
Albemarle, NC 28002
2. Donate online at <https://specialofferings.pcusa.org/offering/christmas-joy/> and press "GIVE NOW" at the top right of the webpage.



First Presbyterian Church continues to provide dinner on the 1<sup>st</sup> Friday of the month at the Community Inn. The next date to serve is Friday, November 5 at 6:30 p.m. Volunteers gather at 6:00 p.m. If anyone is interested in helping, please contact Ruth Cotton (hugawolf@hotmail.com).



### SERRV 2021

This year's SERRV sale will be a catalog sale only. There will be no food, coffee, or tea items for sale in the Pit Stop as we have had in the past. Catalogs will be available in the church office during the week and in the pit stop on Sunday mornings, for you to review and fill out an order form. We plan to place the combined order on Thursday, November 4. We will contact you when your order is ready for pick-up. Orders may also be placed online at <https://www.serrv.org/>.

### SCCM Thanksgiving Food Items Needed:

Cranberries, Fruit in Light Syrup, Dried Potatoes, Gravy, Stuffing,  
Rice, Pie Filling, Canned Vegetables  
Other Items Needed: Toothbrushes, Toothpaste, Hand Soap



### Community Table on Saturday, November 6 9:30 a.m.-1:00 p.m.

On Saturday, November 6, FPC will be providing lunch for the guests at the Community Table. Recently they have been serving anywhere from 80-100 people on Saturdays. Our menu will be sloppy joes, marinated beans, fruit, chips, and dessert.

We will need donations of the following items for this lunch.

- Sloppy joes (enough to serve 20)
- Individual bags of chips
- Individual fruit cups
- Hamburger buns
- Homemade or bought cakes, brownies, or cookies (no icing)
- Money to be used to help buy whatever is not donated (money may be given to Kyle in the church office).



If you wish to donate any food items, please contact Linda Anderson in order to avoid too much of any one item. If you plan to donate money, please let Linda know that as well.

All donations need to be in the church kitchen by Thursday afternoon, November 4. Please label your donation with a CT sign. When dropping off donations, call the church office to be sure someone will be there to let you in.

We will need 5 people to help on that Saturday. If you are able to help us assemble the takeout containers and hand them out on that Saturday, please call Linda Anderson at 704-982-3723.

### For Central Elementary School...Backpack Food Program Donations Needed:

Oatmeal Packets, Breakfast Cookies, Individual Bags of Goldfish, Large Cans of Soup, Saltine Crackers, Tuna Helper, Cans of Tuna, Chicken Helper, Cans of Chicken, Snack Crackers, Pineapple, or Fruit Cocktail Cups

**Donations may be dropped off in the Pit Stop at the church.**

**Packing Dates: Wednesdays, November 3 & 10 at 10:30 a.m.**

### Afghan Refugee Resettlement

Earlier this month, two Afghan men fleeing the Taliban, were re-settled in Stanly County. Both men have been fully vetted and have the promise of full-time jobs but are waiting for their documentation papers in order to begin work. Norwood First Presbyterian Church's leadership responded to the situation by donating the first month's rent for a fully furnished house. Given the administrative delay, an appeal went out and donations were received to pay the second month's rent. It may be 2 or 3 more weeks before the men have the necessary documentation in hand.

Looking down the road, partial assistance may be needed to cover the third month's rent. In addition, a used car will be needed for these individuals to become self-sufficient. First Norwood is setting up a fund for their resettlement needs. If donations exceed those needs, the church will transfer those funds to the next refugee resettlement in our Presbytery. If you would like to help in this effort to welcome our neighbors, you can make a donation to that end. You may contact Rev. Julie Hill (juliehill203@gmail.com; 704/904-7261) for more information or send your donation directly to Norwood First Presbyterian Church, P.O. Box 596, Norwood, NC 28128. Please write Refugee Assistance in the memo line.



# NEWS & NOTES

**New Address**

Lynn & Martha White  
1620 Windsor Run Ln, Apt. 111  
Matthews, NC 28105

**Session Notes**

Session held its monthly meeting on October 17. Reformation Sunday/Scottish Communion/Kirkin' of the Tartans will take place on Sunday, October 31. All Saints Day will be on November 7. Reverend Cathy George has enjoyed her start at First Presbyterian Church; it has been a fantastic two weeks. Look for upcoming event information from the Christian Education Committee and others as we move into the holiday months.

Steve Cumming, Clerk of Session

\*\*\*\*\*



**Thanks to the following people for helping at the church recently:** Linda Anderson, Mildred Andrew, Ann Duckwall, John Earnhardt, Donna Gaither, Jim Hesley, Ken Knight, Catherine Moeller, Anne Montgomery, Frankie Palmer, Evan Sanges, and Rich Schaefer.

**Volunteer Thanks for First Family Drive-Thru Meal, 3<sup>rd</sup> Wednesday Drive-Thru Meal, and Loy Cuisine Drive-Thru Meal**

We could not do these drive-through without these wonderful volunteers: Linda Anderson, Andy Cotton, Ruth Cotton, Ann Duckwall, Peggy Finley, Jennifer Hesley, Jim Hesley, Cathy King, Chris Mabry, Lee McLaurin, Frankie Palmer, Ned Russell, Gayle Russell, Caroline West, and Terri West. Thank you so much for your help, your energy, your ideas, and your generous spirit. Your presence and enthusiasm are a rich blessing to our church! We appreciate you!!!

Jane Snyder, Director of Fellowship and Congregational Care

## !!! PFEIFFER PFRIENDS ARE NEEDED !!!



The Health Sciences Program of Pfeiffer University continues its presence in downtown Albemarle. Students from across the United States and the world are working on a degree in the Physician's Assistant or Occupational Therapy Programs. First Presbyterian, along with some other churches in downtown, are in partnership with these students which is similar to our Silent Partner program for our college students. The main difference is the length of the relationship (each program is 27 months long), and the Pfeiffer student will know who their friend is. It is the hope that there will be communication at least once a month between the friend and the student. **There will be approximately 45 additional students beginning the Physician's Assistant program in January 2022. Your willingness to be a Pfeiffer Pfriend would be a blessing.** For more information, please email Martha Sue at hallmsh@hotmail.com or call her at 704-985-5821.

**!!! ATTENTION !!!  
DAYLIGHT SAVING TIME ENDS  
ON SUNDAY, NOVEMBER 7.  
REMEMBER TO SET YOUR CLOCKS BACK ONE HOUR!**



**Congratulations to our nursery worker,  
Kate White,  
upon being crowned  
Miss Stanly County 2022!**



In an effort to keep the prayer list updated, we would appreciate your help. Please notify the church office (704-982-2722 or pknighnten@fpcalbemarle.org) or Martha Sue Hall (704-985-5821 or hallmsh@hotmail.com) of changes.

Thank you.

## prayer Requests



Do you ever see a name on the prayer list and think, *Now who is that?* Or forget what the relationship is? You are not alone as many folks have asked for help with this. The *Prayer List Connection* will refresh all our memories. Folks with chronic needs will be listed for a month in the bulletin. Following that month, we will keep them on the newsletter's *Prayer List Connection* for as long as we are requested to do so. Critical prayer concerns will be added weekly to the prayer list in the bulletin.

### Friends of the Congregation:

**David Bailiff**, friend of Debbie Hahn; previous kidney transplant concerns & immunity issues.  
**Debra Barnard**, daughter of Gloria Bryson; liver cancer.  
**David & Marsha Bell**, friends of Debbie & John Hahn; David has cancer.  
**Tom Bonekemper**, cousin of Linda Anderson; pancreatic cancer.  
**David Bryson**, son of Gloria Bryson.; recovering from surgical hip replacement.  
**Lindsey Clark**, wife of Marty Clark, friend of Debbie Hahn; metastatic breast cancer.  
**Gus Feather**.  
**Debbie Gabriel**, sister of Gayle Russell; recovering from COVID.  
**Calvin Hall**, friend of Ruth Goodwin; kidney cancer – physical therapy for stroke.  
**Lindsey (Whitley) Harward**, daughter of Carolyn & Mel Whitley.  
**Anna Hartsell**, daughter of Janet & Gary Hartsell; colon cancer.  
**Ann Hatcher**, mother of Ann Snuggs; recovering from a fall.  
**Sean Hickey**, brother-in-law of Lori Ivey; colon cancer.  
**Denise LaBoube**, half-sister of Martha White; Glioblastoma.  
**Molly Amelia Lowder**, low immunity health concerns.  
**Fred & Wendy McInturff**, parents of Michelle Cumming.  
**Maddie McRae**, daughter of Renee & Keith McRae; diagnosis & treatment for a brain tumor.  
**Bryanna Medlin**, Hodgkins Lymphoma.  
**Bern Morehead, III**, son of Sally Pleasant & Dr. Bernard “Bernie” Morehead; diagnosed with brain tumor.  
**James Nunn**, nephew of Billie Jean Snuggs; continuing health concerns.  
**Sally Ormand**, friend of Ruth Goodwin; cancer treatment.  
**Susan & John Prevatte**.  
**Mark Rodgers**, son of Laura and Tim Rodgers.  
**Sam Roper**, father-in-law of Marsh Rogers; cancer diagnosis.  
**Judy Ross**, friend of Tom & Holly Norwood; diagnosis of pancreatic cancer.  
**Jane Scheer**, spouse of Stan Scheer; Spring Arbor.  
**Gail Shields**, friend of Martha Sue Hall; battling COVID.  
**Brad Slusher**, half-brother of Martha White; pancreatic cancer & COPD.  
**Betty Stancik**, sister of Bill Hall; continuing health concerns.  
**Garin Stepp**, Duchenne Muscular Dystrophy.  
**Kim & Jimmy Underwood**, friends of Martha Sue Hall; bad car accident.

### Members of the Congregation:

**Don Abernathy**, multiple myeloma.  
**Gloria Bryson**.  
**Banks Garrison**.  
**Anita Gower**.  
**Claude Harwood**.  
**Robin Howell**.  
**Derreck Huneycutt**.  
**Don Joines**.  
**Nancy Jolly**, Trinity Place.  
**Jane Pickler**.  
**Jean Rabe**.  
**Pete Smith**.





# NOVEMBER BIRTHDAYS

- |                       |                       |
|-----------------------|-----------------------|
| 01- Donna Gaither     | 14- Carol Sasser      |
| 03- Barbara Overcash  | 17- Taylor Johnston   |
| 04- Connie Wallace    | 19- Gus Feather       |
| 06- Shannon Newport   | 21- Debbie Wainwright |
| 08- Leni Henkenjohann | 23- Gayle Russell     |
| Nancy Joines          | Thomas Taylor         |
| Mary Louise Sawyer    | 24- John Earnhardt    |
| 09- Ann Duckwall      | 25- Shirley Hinson    |
| Ross Holshouser       | 26- Jennifer Hesley   |
| Sarah Newport         | 29- Janice Abernathy  |
| 11- Rose Saltzman     | Matt Drumheller       |
| Bill Stevenson        | 30- Bill Hall         |
| 12- Jay Andrew        | Diane Stevenson       |
| 13- Lori Ivey         |                       |



# NOVEMBER ANNIVERSARIES

- |                              |                              |
|------------------------------|------------------------------|
| 03- Matt & Katie Carpenter   | 22- Ned & Gayle Russell      |
| 04- Bo & Lauren Andrew       | 26- Mark & Kim Andrew        |
| 17- Steve & Michelle Cumming | 29- Skeet & Elizabeth Ayscue |
| Richard & Joyce Lambert      |                              |

\*\*\*\*\*



- |             |  |
|-------------|--|
| November 7  | <b>S'mores &amp; Game Night</b><br>Meet at FPC, Albemarle at 5:30 p.m. to travel to Norwood for a night of games and firepits. We will be making S'Mores and building community with our FPC, Norwood friends. We will return to the FPC, Albemarle parking lot at 8:30 p.m. |
| November 11 | <b>Veteran's Day at Morrow Mountain</b><br>10:00 a.m.-8:00 p.m.* Come & go as you want/need  |
| November 14 | <b>Youth meet from 6:30 p.m.-8:00 p.m. at FPC, Albemarle</b>   |
| November 21 | <b>Youth Friendsgiving – Details TBA</b>   |
| November 28 | <b>Thanksgiving Break – Enjoy time with your family!</b>   |

### Veteran's Day on the Mountain Thursday, November 11 10:00 a.m.-8:00 p.m.\*

School's out on **November 11**, so spend the day at Morrow Mountain.

***\*We'll have a basecamp, you can come and leave when you want/need.***

Food, Lawn Games, Hiking, Boating, Fires, Tie Dye, S'mores, and More!

RSVP to Rebekah – 704-985-2944; rebekah.ayscue@gmail.com

(Reading this and wishing you were in Youth Group? We'd love to have you as a volunteer. Connect with Rebekah!)



**High School Faith Conversations for 9<sup>th</sup>-12<sup>th</sup> graders  
with Steve Cumming & Debby Johnston  
at the home of Debby Johnston  
(1212 Heritage Drive, Albemarle)  
Mondays from 8:30 p.m.-9:30 p.m.**

**For more information, contact Debby Johnston.  
(704-322-8139 or debbyjohnston@hotmail.com)**



**New Youth App**

Please sign-up for the SPOND App to keep up  
with the events we have coming up!

<https://group.spond.com/LTOXZ>



# Prayer Shawl Ministry

The Prayer Shawl Ministry will meet on Wednesday, November 3 at 1:30 p.m. in the Parlor. Please contact Peggy Finley at 704-985-1136 or maf447@windstream.net if you have questions.

\*\*\*\*\*



## FIRST FAMILY MEAL

**WEDNESDAY, NOVEMBER 3 FROM 5:00 P.M.- 6:00 P.M.**

**RSVP BY 2:00 P.M. ON MONDAY, NOVEMBER 1**

**PICK-UP OR DELIVERY OF THE MEAL**

First Family Meal Pick-up or Delivery is on Wednesday, November 3! Unfortunately, we are still unable to gather for First Family in November. If you would like a First Family meal, please RSVP by Monday, November 1 at 2:00 p.m., and we will have your meal ready for pick-up or delivery on Wednesday, November 3 between 5:00 p.m.-6:00 p.m. For your safety, the kitchen staff will wear masks and gloves while preparing your plates.

**Menu: Teriyaki Chicken, Rice, Broccoli, Caesar Salad, Sweet Potato Cake, Pound Cake and Brownies**

**Suggested Donation: \$5 per person....Maximum of \$15 per family.**

**Please come with correct change or a check written to First Presbyterian Church.**

**All we need you to do is:**

**call Anne Montgomery at 704-796 5841 or email Anne at johnandannemontgomery@yahoo.com**

**and let her know how many plates you need,**

**if you would like sweet potato cake, pound cake or brownies for each meal**

**and if it will be a pickup or delivery (include address and any special instructions).**

Though we will not share the meal at the same table, we will delight in the opportunity to share the same meal at our own tables. A prayer and table ritual will be included for each household. Sharing the meal and the ritual will bind us together as the one body of Christ.

\*\*\*\*\*

**Circle 5 will meet Wednesday, November 10 at 1:30 p.m. in the Pit Stop**

**Circle 5 will meet in the pit stop on Wednesday, November 10 at 1:30 p.m. We will study Lesson 3 of *What My Grandmothers Taught Me*.**



\*\*\*\*\*



## DRIVE-THRU LUNCH

**TUESDAY, NOVEMBER 9 FROM 11:30 A.M.- NOON**

**RSVP BY 2:00 P.M. ON MONDAY, NOVEMBER 8**

**PICK-UP OR DELIVERY OF THE MEAL**

**GLORY BEANS is partnering with FPC to provide lunch to you! Drive-Thru Meal Pick-up or Delivery is on Tuesday, November 9! Please RSVP by Monday, November 8 at 2:00 p.m., and we will have your meal ready for pick-up or delivery on Tuesday, November 9 between 11:30 a.m.-NOON. For your safety, kitchen staff will wear masks and gloves while preparing your plates. \*\*\*PLEASE NOTE CHANGE OF DAY!!!**

**Menu:**

**Chicken Bacon Ranch Wrap (flour tortilla stuffed with grilled chicken, bacon, lettuce and tomato), Potato Chips, and Gayle Russell's Persimmon Pudding**

**Suggested Donation: \$5 per person....Maximum of \$15 per family.**

**Please come with correct change or a check written to First Presbyterian Church.**

**All we need you to do is: call or text Jane Snyder at 704-438-3358 and let her know how many plates you need.**

**And if it will be a pickup or delivery (include address and any special instructions).**

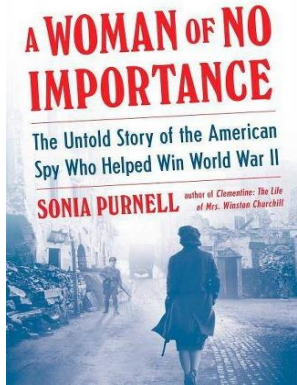


The December Newsletter Deadline is **Tuesday, November 16.**

Early submissions are always welcome!

If you type your items in Microsoft Word, please email them as an attachment to: [pknighten@fpcalbeamarle.org](mailto:pknighten@fpcalbeamarle.org).

\*\*\*\*\*



## Book Conversation Monday, November 15 at 7:00 p.m. in the Parlor Book: *A Woman of No Importance* by Sonia Purnell

Our book for November will be *A Woman of No Importance* by Sonia Purnell. We will meet November 15 (please note the date change) at 7:00 p.m. in the parlor. Please wear your mask. The Book Discussion Group will not meet in December.

In 1942, the Gestapo sent out an urgent transmission: *She is the most dangerous of all Allied spies. We must find and destroy her.* The target in their sights was Virginia Hall, a Baltimore socialite who talked her way into Special Operations Executive, the spy organization dubbed Winston Churchill's *Ministry of Ungentlemanly Warfare*. She became the first Allied woman deployed behind enemy lines and – despite her prosthetic leg- helped to light the flame of the French Resistance, revolutionizing secret

warfare as we know it. Virginia established vast spy networks throughout France, called weapons and explosives down from the skies, and became a linchpin for the Resistance. Even as her face covered wanted posters and a bounty was placed on her head, Virginia refused order after order to evacuate. She finally escaped through a death-defying hike over the Pyrenees into Spain, her cover blown. But, she plunged back in, adamant that she had more lives to save, and led a victorious guerilla campaign, liberating swathes of France from the Nazis after D-Day.

Based on new and extensive research, Sonia Purnell has for the first time uncovered the full secret life of Virginia Hall – an astounding and inspiring story of heroism, spycraft, resistance, and personal triumph over shocking adversity. *A Woman of No Importance* is the breathtaking story of how one woman's fierce persistence helped win the war.

\*\*\*\*\*



## 3<sup>rd</sup> WEDNESDAY DRIVE-THRU MEAL WEDNESDAY, NOVEMBER 17 FROM 5:00 P.M. - 6:00 P.M. RSVP BY 2:00 P.M. ON MONDAY, NOVEMBER 15 PICK-UP OR DELIVERY OF THE MEAL

Drive-Thru Meal Pick-up or Delivery is on Wednesday, November 17! Please RSVP by Monday, November 15 at 2:00 p.m., and we will have your meal ready for pick-up or delivery on Wednesday, November 17 between 5:00 p.m.-6:00 p.m. For your safety, the kitchen staff will wear masks and gloves while preparing your plates.

Menu: Black Bean Cake with Yogurt Lime Sauce (on the side), Homemade Salsa, Mixed Green Salad, Tortilla Chips and Blondie Brownies

**Suggested Donation: \$5 per person....Maximum of \$15 per family.**

**Please come with correct change or a check written to First Presbyterian Church.**

All we need you to do is: call Anne Montgomery at 704-796-5841 or email Anne at [johnandannemontgomery@yahoo.com](mailto:johnandannemontgomery@yahoo.com) and let her know how many plates you need, and if it will be a pickup or delivery (include address and any special instructions).

\*\*\*\*\*

## VETERANS DAY FLORAL ARRANGEMENTS

On Veterans Day, the flowers in the sanctuary will be in honor/memory of veterans. **Each name is \$2.00.** Please mail, deliver or place in the offering plate your money with the form below **no later than Sunday, November 7.** Please make your check payable to *First Presbyterian Church* and designate for Veterans Day Arrangements. The names of donors and those being remembered/honored will be listed on Sunday, November 14.



## VETERANS DAY ARRANGEMENTS

Please print below the information exactly as it is to appear in the bulletin.

In memory of: \_\_\_\_\_

Given by: \_\_\_\_\_

In honor of: \_\_\_\_\_

Given by: \_\_\_\_\_



**PrimeTimers' Drive-Thru Luncheon**  
**Thursday, November 18**  
**Pick-up your boxed lunch**  
**between 12:00 p.m.-12:30 p.m.**

**Menu:**

**Wes Eudy's BBQ, Slaw, Chips, Fruit, & Dessert**

**Text or Email Laura McLeod:**

**704-796-0487 or mcleod2@windstream.net**

**by Noon on Monday, November 15**



**First Presbyterian Church**  
**Fall Art Gallery Exhibit**  
**Featuring the artwork of**  
**John Williams,**  
**Jack Williams, and**  
**Eli Williams**  
**Located in the**  
**Basement Office Hallway**



**Congratulations to our Newly Elected Officers**

**Deacons (Class of 2024):**

**Shannon Bullard, Wes Eudy, Lillie Hancock, Liz Jolly, and Myron Lowder**

**Ruling Elders (Class of 2024):**

**Bill Jolly, Mary Kesselman, Andy McLeod, Catherine Moeller, and Chris Whitley**

**Nominating Committee 2022:**

**Bob Johnston, Gayle Russell, and officers from Session & Diaconate**

**Training for the new officers will be held November 13 from 10:00 a.m.-Noon. Please hold these folks in prayer as they prepare to serve the congregation. Officers will be ordained and installed in January 2022.**

**Morning Prayer on Mondays and Wednesdays at 10:00 a.m. via Zoom**

Our online Morning Prayer Group continues to meet on Monday and Wednesday mornings during this transitional period of our church. We spend some time discussing our joys and concerns, and especially the needs of our church members. The group is open to anyone who wishes to participate. If you have a prayer request or questions, please contact Debbie Hahn at 704-985-9419. To access the Morning Prayer Group Link, you may go to the church's website (firstpresalbemarle.org) and click on the Morning Prayer Link or type in the URL below:



<https://us06web.zoom.us/j/82675799531?pwd=enR2WUVZdGRyeHpFN2VRK0EwN2kwUT09> or go to zoom.us click on Join a Meeting at the top of the page and type in the Meeting ID and passcode, which are listed below, when prompted to do so.

The Meeting ID is: 826 7579 9531      The passcode is: 295190

**Bible Study and Conversation**

**Meets via Zoom on Thursdays from 4:00 p.m.-5:00 p.m.**

Matt and Catherine Moeller continue to lead Bible study on Thursdays from 4:00 p.m.-5:00 p.m. on Zoom. Each week, we discuss the Scripture that will be used as the basis for the sermon the following weekend. We analyze the Scripture reading itself and discuss how to apply it in our lives. We also have a time in prayer. Please join us. If you have any questions, please contact Matt and Catherine (MattandCatherine@hotmail.com).





Youth Club continues to meet on Wednesdays and the 16 children enjoy spending time with their friends while they learn to **Follow Jesus**. Their lessons each week assist them in making decisions about following Jesus at home, school, church and out in the community. When we choose to follow Jesus, to become a disciple, we are choosing to be taught and formed into someone who is Christ-like. Jesus shows us what we are choosing: how to love God and love one another.

**Trusty Travelers ...K-3<sup>rd</sup> graders** will focus on loving God and neighbor by making telescopes of love to help them look for love in God's world. They will look all around for places they see people practicing the commandments to love God and love neighbor.

**Faith Explorers...4<sup>th</sup> & 5<sup>th</sup> graders** will spend time this month learning more about food insecurities and a representative from Stanly Community Christian Ministries (SCCM) will come out and talk about how needs in our community and how that organization helps meet those needs. The children, along with their leaders, Ann Crutchfield and Sarah Michael, will organize a downtown walkable food drive to collect non-perishable food items for SCCM. They will deliver and weigh the food items and get a tour of the food pantry.

Both groups will be practicing music with Frank in preparation for the upcoming **Joy Program** set for **Sunday, December 12 during worship**.



## Faith Explorers Sunday Outing on November 14 following worship

### Take A Hike

Our 4<sup>th</sup> & 5<sup>th</sup> graders are invited to join in the outdoor fun at Morrow Mountain for an afternoon of hiking and exploring God's beautiful creation. Bring a bag lunch, and we will eat at Morrow Mountain before we hike. Transportation to Morrow Mountain provided, along with bottled water. Bring a bag lunch, comfortable hiking/walking shoes and a water bottle. RSVP to Kate Gibson (katherine.e.gibson@gmail.com or 336-301-4564 or Thomas Taylor (thomastaylor7@gmail.com or 704-467-3777 by **Wednesday, November 10** to let them know that your Faith Explorer will attend. Parents: Pick up time: 3:30 pm at the church.

## !!! Hurray For Breakfast Bunch for K-5<sup>th</sup> Graders !!!

Who can come?

What?

When?

Where?

Why?

**UPDATED FOR ANYONE IN KINDERGARTEN-5<sup>TH</sup> GRADE**

Gathering as Friends to Enjoy Breakfast

**Sunday, November 14 at 9:00 a.m.**

Media Room

To pray together & build strong community of faith

Please let Rebekah Ayscue (rebekah.ayscue@gmail.com) or Katherine Jolly (kat6420@gmail.com) know if you are able to join us. Muffins, yogurt, and fruit provided.

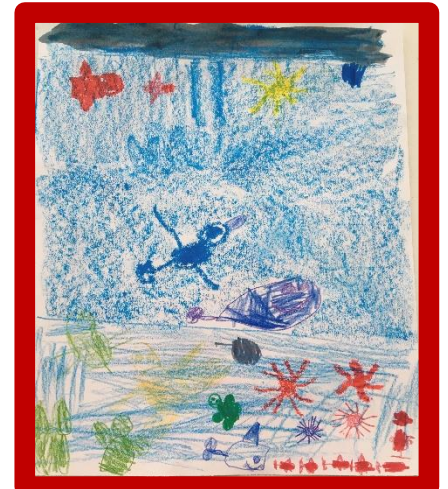
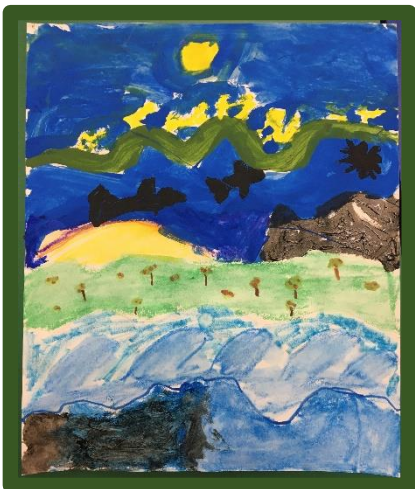
\*\*\*\*\*



## New Artwork in the Education Building

Children at Youth Club had opportunity recently to create original works of art with a focus on *Creation*. Each group has used a different medium to imagine something unique. The kindergartners and first graders used crayons and colored pencils to draw their idea of one of the days of creation. Some chose to create the land and animals, while others created the sea and sea life. The second and third graders painted their version of the first day of Creation, entitled *Darkness to Light*, using acrylic and water color paints. The fourth and fifth graders combined all the days of Creation using acrylics and markers.

Their finished works will soon be hung in the gallery hallway in the Education Building. A special *thank you* goes out to Barbara Lindley for leading the children and displaying their wonderful works of art.



# 2021-2022 College Students Contact Information...UPDATED

## **Lee Boone (University of South Carolina)**

2425 Cypress Street  
Columbia, SC 29205  
Email: LDBOONE@email.sc.edu  
Birthday: February 2

## **Duncan Bryson (UNC-Charlotte)**

9201 University City Blvd.  
Levine Hall Room 422  
Charlotte, NC 28223  
Email: Unavailable  
Birthday: December 27

## **Judson Bullard (Baylor University)**

One Bear Place 81884  
Waco, TX 76798-1884  
Email: Judson\_bullard1@baylor.edu  
Birthday: October 28

## **Kimbal Chapman (East Carolina University)**

Greene Hall 0422  
East Carolina University  
1000 East 5<sup>th</sup> Street  
Greenville, NC 27858-4353  
Email: kimbalcheer@gmail.com  
Birthday: August 16

## **Angus Currie (Camden Military Academy)**

520 Highway 1 North  
Bravo Company  
Camden, SC 29020  
Email: unavailable  
Birthday: September 20

## **Lachlann Currie (Appalachian State University)**

151 Kimberly Drive  
Boone, NC 28607  
Email: currieml1@appstate.edu  
Birthday: March 27

## **Sam Holshouser (Appalachian State University)**

290 North Hampton Road  
Unit 204  
Boone, NC 28607  
Email: holshouserst@appstate.edu  
Birthday: March 24

## **Robert Ivey (Montgomery Community College)**

32728 Guard Road  
Albemarle, NC 28001  
Email: iveyr2288@student.montgomery.edu  
Birthday: March 6

## **AJ (Adam) Jolly (UNC-Asheville)**

UNCA Box #8501  
2500 University Heights  
Asheville, NC 28804  
Email: bjolly@unca.edu  
Birthday: July 26

## **Grayson Jones (North Carolina State University)**

3101 Hillsborough Street  
Apt. 338  
Raleigh, NC 27607  
Email: gdjones2@ncsu.edu  
Birthday: April 10

## **David Kilde (Davidson College)**

P.O. Box 5328  
Davidson, NC 28035-5328  
Email: drtkilde@gmail.com  
Birthday: April 17

## **Morgan Kinley (Appalachian State University)**

Box 13303  
Boone, NC 28608  
Email: [kinleymg@appstate.edu](mailto:kinleymg@appstate.edu) or [morkin0312@gmail.com](mailto:morkin0312@gmail.com)  
Birthday: March 12

## **Will Little (Pfeiffer University)**

P.O. Box 21  
Albemarle, NC 28002  
Email: williamlittle72@yahoo.com  
Birthday: April 20

## **Luke Marshall**

Campbell University School of Law  
4000 Manor Club Drive, Apt. 111  
Raleigh, NC 27612-3644  
Email: unavailable  
Birthday: October 26

## **Jacob Palmer (UNC-Chapel Hill)**

450 Ehringhaus Drive  
#358  
Chapel Hill, NC 27514  
Email: Jacobhp15@gmail.com  
Birthday: January 10

## **Grace Richards (Western Carolina University)**

245 Memorial Drive Suite #7439  
Cullowhee, NC 28723  
Email: unavailable  
Birthday: September 10

## **Witt Snuggs (North Carolina State University)**

Address not available at this time.  
Email: LDSNUGGS@NCSU.edu  
Birthday: June 4

## **Anna Wainwright (University of California-Irvine)**

66101 Verano Road  
Irvine, California 92617  
Email: annablake222@gmail.com  
Birthday: June 30



# November

## Monday, November 1

- 10:00 am Morning Prayer via Zoom
- 2:00 pm RSVP to First Family Meal
- 8:30 pm-9:30 pm High School Faith Conversations at the home of Debby Johnston (1212 Heritage Dr., Albemarle)

## Wednesday, November 3

- 6:45 am Men's Prayer Breakfast
- 10:00 am Morning Prayer via Zoom
- 10:30 am Backpack Food Program
- 1:30 pm Prayer Shawl Ministry (Pit Stop)
- 3:30 pm-5:30 pm Youth Club (K-5<sup>th</sup> Graders)
- 5:00 pm-6:00 pm First Family Drive-Thru Meal
- 5:30 pm-6:00 pm Youth Club Handbells with Frank Poolos
- 6:15 pm Chancel Choir Rehearsal (Sanctuary)

## Thursday, November 4 *Deadline for SERRV Catalog Order*

- 10:00 am Staff Meeting
- 4:00 pm-5:00 pm Zoom Bible Study with Catherine & Matt Moeller

## Friday, November 5

- 6:00 pm Meal for the Community Inn

## Saturday, November 6

- 9:30 am-1:00 pm Community Table

## Sunday, November 7 *All Saint's Day/Consecration Sunday/Ten-Cents-A-Meal Offering for Hunger/The Sacrament of the Lord's Supper/Daylight Saving Time Ends/Deadline for Veteran's Day Flower Form*

- 9:30 am The Wired Word Sunday School Class via Zoom
- 9:45 am \*Sunday School
- 11:00 am \*Worship
- 5:30 pm SNL Youth meet to travel to FPC, Norwood for S'mores & Game Night

## Monday, November 8

- 10:00 am Morning Prayer via Zoom
- 2:00 pm RSVP for partnership lunch with GloryBeans
- 8:30 pm-9:30 pm High School Faith Conversations at the home of Debby Johnston (1212 Heritage Dr., Albemarle)

## Tuesday, November 9

- 11:30 am-12:00 pm Drive-Thru Lunch with GloryBeans

## Wednesday, November 10

- 6:45 am Men's Prayer Breakfast
- 10:00 am Morning Prayer
- 10:30 am Backpack Food Program
- 1:30 pm Circle 5 meets in the Pit Stop
- 3:30 pm-5:30 pm Youth Club (K-5<sup>th</sup> Graders)
- 5:30 pm-6:00 pm Youth Club Handbells with Frank Poolos
- 6:15 pm Chancel Choir Rehearsal (Sanctuary)

## Thursday, November 11 *Veteran's Day*

- 10:00 am Staff Meeting
- 10:00 am-8:00 pm SNL Youth Veteran's Day at Morrow Mountain
- 4:00 pm-5:00 pm Zoom Bible Study with Catherine & Matt Moeller

## Saturday, November 13

- 10:00 am-Noon New Officer's Training

\*childcare provided

## Sunday, November 14

### *Dedication of Operation Christmas Child Shoeboxes*

- 8:45 am Diaconate Meeting In-Person
- 9:00 am Breakfast Bunch (K-5<sup>th</sup> Graders – Media Room)
- 9:30 am The Wired Word Sunday School Class via Zoom
- 9:45 am \*Sunday School & Intergenerational Event (Gym)
- 11:00 am \*Worship
- 12:00 pm Faith Explorers Hike at Morrow Mountain State Park with pick-up at the church at 3:30 p.m.
- 6:30 pm-8:30 pm SNL Youth at FPC, Albemarle

## Monday, November 15

- 10:00 am Morning Prayer via Zoom
- 2:00 pm RSVP for 3<sup>rd</sup> Wednesday Drive-Thru Meal
- 7:00 pm Book Conversation (Pit Stop)
- 8:30 pm-9:30 pm High School Faith Conversations at the home of Debby Johnston (1212 Heritage Dr., Albemarle)

## Tuesday, November 16

- 12:00 pm December Newsletter Deadline

## Wednesday, November 17

- 6:45 am Men's Prayer Breakfast
- 10:00 am Morning Prayer via Zoom
- 3:30 pm-5:30 pm Youth Club (K-5<sup>th</sup> Graders)
- 5:00 pm-6:00 pm 3<sup>rd</sup> Wednesday Drive-Thru Meal
- 5:30 pm-6:00 pm Youth Club Handbells with Frank Poolos
- 6:15 pm Chancel Choir Rehearsal (Sanctuary)

## Thursday, November 18

- 10:00 am Staff Meeting
- 12:00 pm-12:30 pm PrimeTimers' Drive-Thru Lunch
- 4:00 pm-5:00 pm Zoom Bible Study with Catherine & Matt Moeller

## Sunday, November 21 *Christ the King Sunday/Thanksgiving Offering for Children's Hope Alliance (formerly Barium Springs Home for Children)/Alternative Gifts/SNL Youth Friendsgiving*

- 8:30 am Session Meeting In-Person
- 9:30 am The Wired Word Sunday School Class via Zoom
- 9:45 am \*Sunday School
- 11:00 am \*Worship

## Monday, November 22

- 10:00 am Morning Prayer via Zoom
- 8:30 pm-9:30 pm High School Faith Conversations at the home of Debby Johnston (1212 Heritage Dr., Albemarle)

## Wednesday, November 24

### *No Youth Club/No Chancel Choir Rehearsal*

- 6:45 am Men's Prayer Breakfast

## Thursday, November 25

### *Thanksgiving Day*

### *Church Office Closed*

## Saturday, November 27

- 10:00 am-12:00 pm Hanging of the Christmas Greenery

## Sunday, November 28

### *First Sunday of Advent/The Sacrament of the Lord's Supper/Alternative Gifts*

- 9:30 am The Wired Word Sunday School Class via Zoom
- 9:45 am \*Sunday School
- 11:00 am \*Worship

## Monday, November 29

- 10:00 am Morning Prayer via Zoom
- 8:30 pm-9:30 pm High School Faith Conversations at the home of Debby Johnston (1212 Heritage Dr., Albemarle)

\*childcare provided

**THOSE WHO SERVE IN NOVEMBER**

**Ushers:** John Earnhardt (captain), Bob Johnston, Jim Marshall, Kim Marshall, Jack Morton, and Penny Morton

**Elder Greeters:** Mike King; Ellen Whitley

**Acolytes:**

November 7: Jordan Hesley  
November 14: Emily Deese  
November 21: Hugh Carpenter  
November 28: Ellie Niederer

**Outside Ushers:**

November 7: Wes Eudy; Chris Whitley  
November 14: Steve Cumming; Ronnie Michael  
November 21: TBD; Lee Snuggs  
November 28: Wes Eudy; Tom Norwood

**Sound:**

November 7: Evan Sanges; Leah Kilde  
November 14: Evan Sanges; Leah Kilde  
November 21: Evan Sanges; Leah Kilde  
November 28: Evan Sanges; Leah Kilde

**Filming:**

November 7: Andy McLeod  
November 14: James Cotton  
November 21: Andy McLeod  
November 28: Katherine Jolly

**Nursery:** Kate White

**Kids Care Crew:**

November 7: Becky Andrew; Emily Andrew  
November 14: Penny Morton  
November 21: Sarah Michael  
November 28: Carol Sasser

**Children's Church for November**

November 7: No Children's Church  
November 14: Kristie Bryson; Elizabeth Bryson  
November 21: Kristie Bryson; Elizabeth Bryson  
November 28: No Children's Church

\*\*\*\*\*

**Church Website Address & Staff Email Addresses**

**Church Website Address:**

www.fpcalbemarle.org

**Church Email Address:**

klambert@fpcalbemarle.org

**Rev. Cathy George:**

cgeorge@fpcalbemarle.org

**Kyle Lambert:**

klambert@fpcalbemarle.org

**Pam Knighten:**

pknighten@fpcalbemarle.org

**Jane Snyder:**

jsnyder@fpcalbemarle.org

**Stan Scheer:**

sscheer@fpcalbemarle.org

**Gina Martin:**

gmartin@fpcalbemarle.org

\*\*\*\*\*

And whatever you do,  
in word or deed,  
do everything in the name  
*of the Lord Jesus,*  
*giving thanks*  
to God the Father  
through him.

Colossians 3:17

